

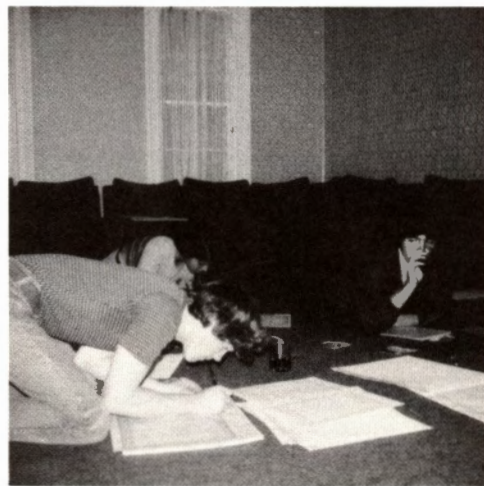
*1974 BLACKHAWK
LESLIE HIGH SCHOOL
LESLIE, MICHIGAN*



YEARBOOK STAFF: Seated—M. Woodland, Advisor Mr. Johnston, D. Smid, D. Felisky. Standing—B. Rockwell, T. Herron, D. Hyatt, C. Chamberlain, A. Houghtaling, D. Bowen, J. Mathews.



Business Manager—Donna Felisky, Co-Editors—Mary Woodland and Debbie Smid.



To you, the students of Leslie High, the 1974 yearbook staff presents **THE BLACKHAWK**. We hope that as you look through this book, it brings back fond memories of 1973-74.



TABLE OF CONTENTS

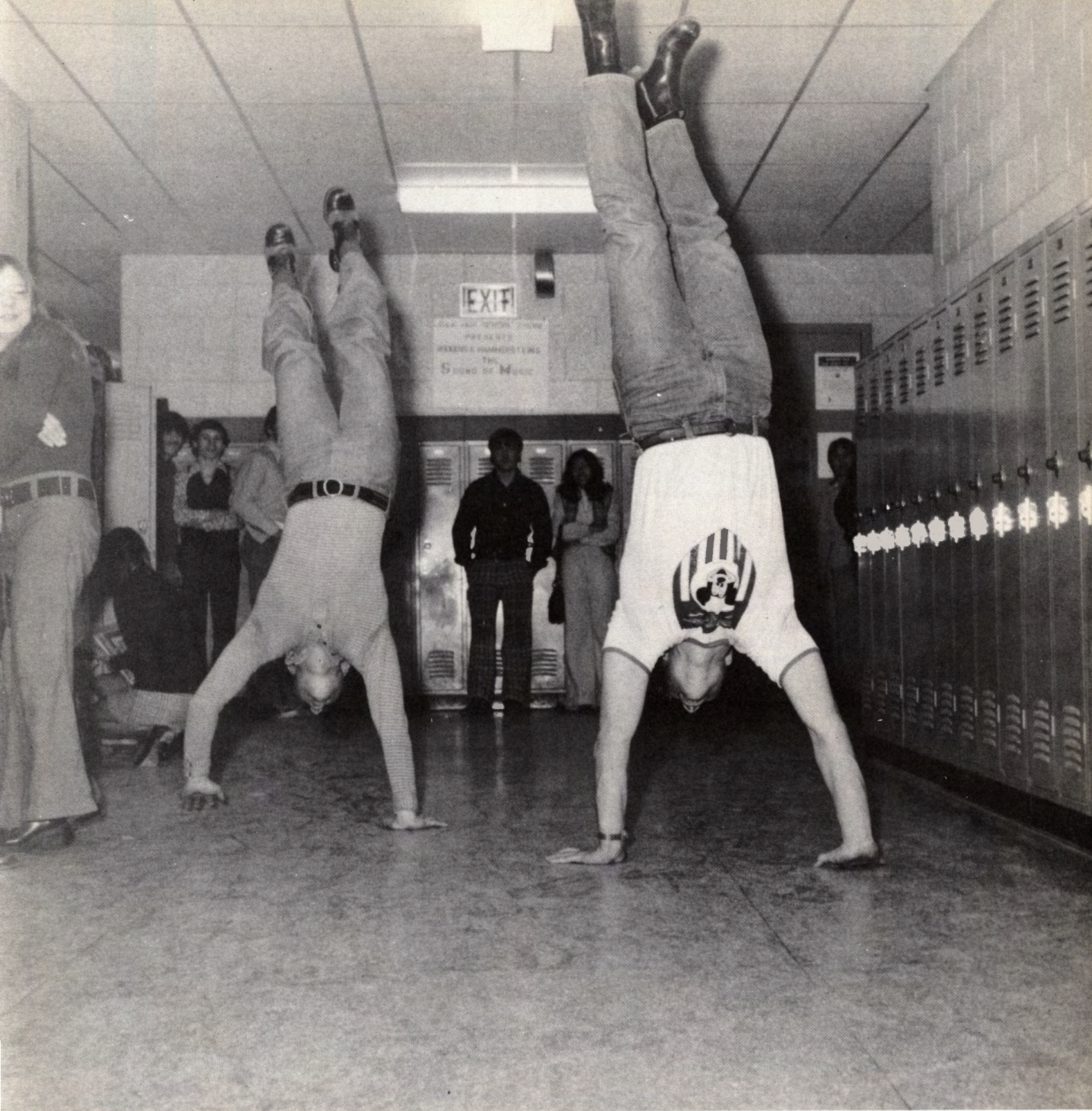
<i>TITLE</i>	<i>1</i>
<i>STAFF</i>	<i>2</i>
<i>SENIORS</i>	<i>5</i>
<i>UNDERCLASSMEN</i>	<i>19</i>
<i>ACTIVITIES</i>	<i>33</i>
<i>SPORTS</i>	<i>81</i>
<i>ADMINISTRATION</i>	<i>93</i>
<i>ADVERTISING</i>	<i>101</i>

old, worn thin,
once gay
now dark, dull,
wrinkled—,
once stiff,
smelling new,
now soft,
bending,
smelling
like earth around house,
ring gone,
buckle bent,
Once held Love,
Now Empty
Old Collar.

Melynda Nutt

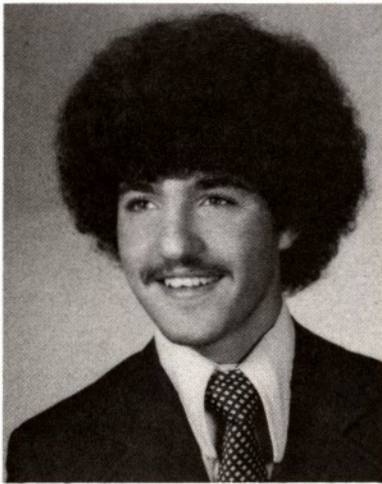
here
am i
my mind so
encased
so enclosed.
ever wondering
ever searching
what is beyond
those bricks of learning
those walls of teaching
i open my eyes, yet i cannot see;
i wonder if
there is a fault,
or crack
to escape through
and how am i
trying, testing,
feeling my mind.
how i must live in accord
with my principles
i only hope my wall shall
not fall.





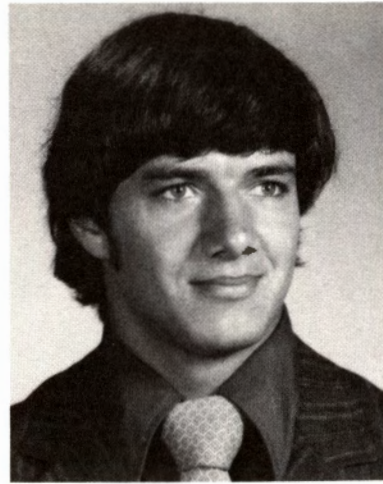
SENIORS

IF I COULD SAVE TIME IN A BOTTLE



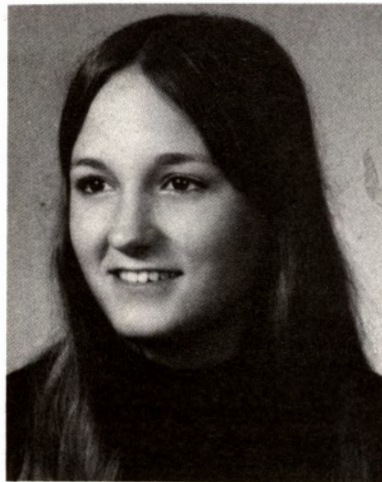
DENNIS B. WRIGHT "Curt"
PRESIDENT

"Those who think they know everything upset those of us that do."
Basketball 1,2,3,4. Baseball 1,2,3,4. Football 2,4. Cross Country 1,3. Choir, Chorale, Musical 3,4. Honor Guard 3. Prom Server 2. Prom Committee 3. Class Officer 3,4. Student Advisory 4. Fred Waring Music Camp.



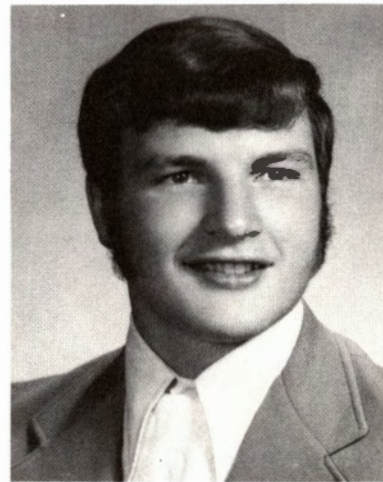
DALTON BEEGLE
VICE PRESIDENT

"Greater is he who conquers himself than he who conquers a thousand."
Football 1,2,3,4. Baseball 1,2,3,4. Basketball 1,2. Weight Lifting 3,4. All Conf. Baseball 3,4. All Conf. Football 3,4. Honor Guard 3. Prom Server 2. Prom Committee 3. Class Officer 3,4. Student Council 4.



SALLY HATCH
SECRETARY

"If you can't say something nice, don't say anything at all."
Class Queen 4. Homecoming Court 4. Class Officer 4. Office Aide 3,4. Girls Glee Club 2.



CARY HOWARD
TREASURER

"Our prayers are answered not when we are given what we ask, but when we are challenged to be what we can be."
Football 1,2,3,4. Basketball 1,2. Baseball 1,2,3,4. Weight Lifting 2,3,4. All Conf. Football 4. Class Officer 4.

THE FIRST THING THAT I'D LIKE TO DO



BILL PARKER
VALEDICTORIAN

"Everyone at some time must envision their own dream, grasp for their own star, reach up, touch the wind, and live. Be yourself."

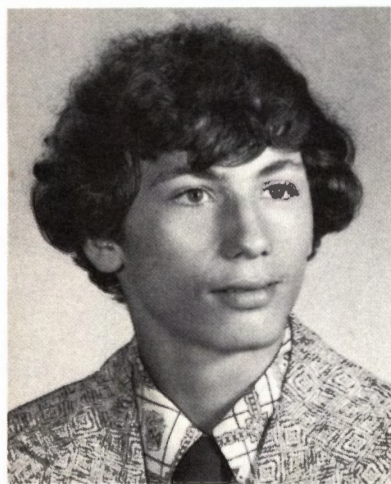
Student Council President 4. Boys State 3. Student Council 3,4. Football 1,2,3,4. Honor Society 2,3,4. Band 1,2,3,4. Stage Band, Pep Band 4. League Student Council 3,4. Student Advisory 3. Pep Club President 4.



SUE REMINGA
SALUTATORIAN

"As you walk the paths of life, think not of former trials, but look on to a future calling."

Girls State 3. Band 1,2,3,4. Pep Band 3,4. DAR Award 4. Hawk's Cry Staff 4. Prom Committee 3. Homecoming Chairman 4. Honor Society 2,3,4. Student Council 2,3,4. League Student Council 2,4.



DON AMES

"Bein' skinny ain't the end of the world."

Wrestling 1,2,3,4. Track 1,3. Baseball 2,4. Cross Country 2,3. Football 4. Glee Club 3,4. Choir 4.



DEBRA ATWOOD

"Marriage—Try it, you'll like it."

Band 1,2.

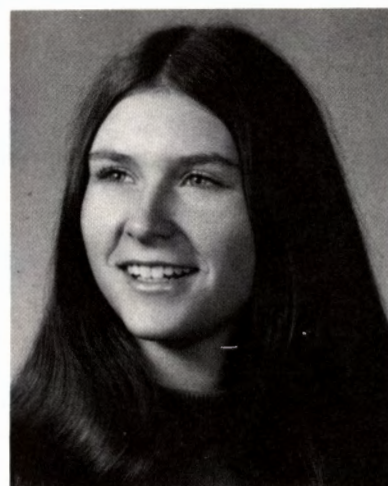
IS TO SAVE EVERY DAY 'TIL ETERNITY PASSES AWAY



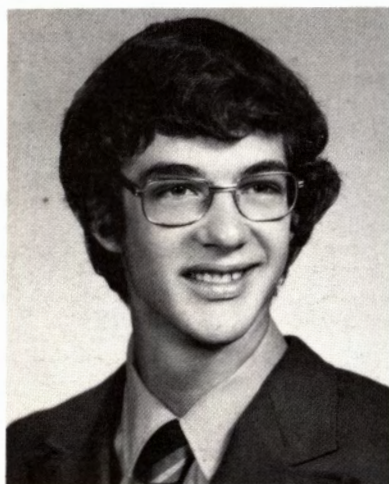
ROBIN BAER "Baer"
"Yea I bet!"
Girls Glee Club 1,2. FHA 1. Teachers
Aide 2,4. Cosmetology 3,4.



CATHY L. BARTLETT "Cathi"
"You have the freedom to be."
Band 1,2,3,4. Stage and 4. Girls Glee
Club 1,2. Library Aide 4.



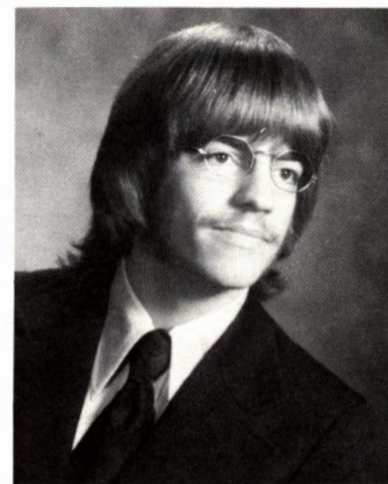
WENDY BATTLESHAW
"Life is what you make of it, so make it
the best."
Girls Glee Club 1,2,4. Volley Ball 2.



WILLIAM COWLES BAYLIS
"No man is the whole of himself, his
friends are the rest of him."
Cross Country 2,3,4. Musicals 3,4. Choir
4. FFA 1. Ski Club 3,4. Debate 3,4. Stu-
dent Advisory 3.



TRACY LEIGH BIGG
"Happy are those who dream dreams
and are ready to pay the price to make
them come true."
Cheerleading 1,4. Girls Glee Club 2.
Chorale 4. Musical 4. Yearbook Staff
2,3. Pep Club 4. Ski Club 4. Debate 3. Li-
brary Aide 3.

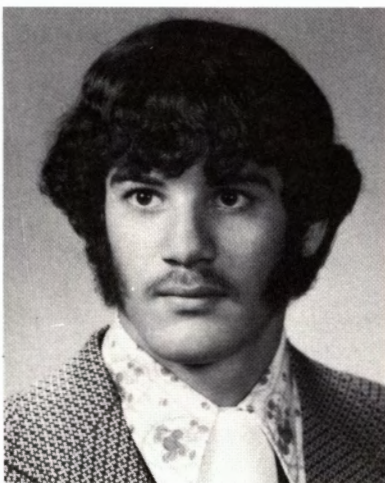


MARTIN BLUME
"Bloom where you are planted."
FFA 1,2,3,4. Biology Club 1,2

JUST TO SPEND THEM WITH YOU



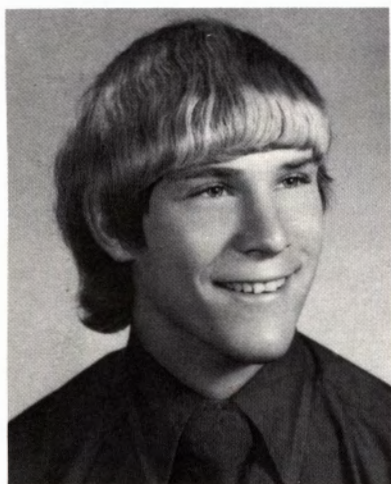
LORI BRATTAIN "Crash"
"Well?"
Choir 2,3,4. Chorale 4. Musical 3,4. Band
1,2,3,4. Honors Band 3. Pep Band 3,4.



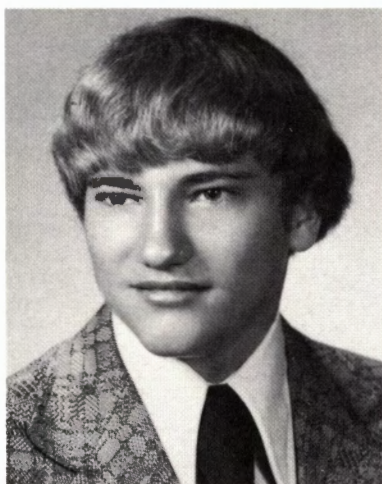
RONE BROWN
"I got that down Pat."
Wrestling 1,2,3,4. Choir 4. Boys Glee
Club 2,3,4.



ELAINE BUCK "Bucky"
"Oh really?"
Girls Glee Club 2. Band 1. Cosmetology
3,4.



DAVID BUDD "Dave"
"Life is like an onion; you peel off one
layer at a time, and sometimes you
weep."
Football 1,2,3,4. Basketball 1,2,3,4.
Track 1-All Conf. Boys Glee Club 4.
Prom Server 2. Student Council 2. FFA
1,2,3.



LYLE BUNKER
"Busted"
Football 2,3,4. Basketball 1,2,3,4. Base-
ball 1,2,3,4. Boys Glee Club 1,2,3,4. FFA
3,4.



CHERYL ANN CHAMBERLAIN
"Life is either a daring adventure, or
nothing."
Girls Basketball 1,2. Band 1,2,3,4. Ma-
jorette 3,4. Yearbook Staff 4. Pep Club
2. Ski Club 2,3,4. Prom Server 2. Prom
Committee 3. Homecoming Court 4.
Class Officer 2. Student Council 4.

IF I COULD MAKE DAYS LAST FOREVER



ROBIN CHURCH

"Conscience may not prevent you from doing wrong, but it sure will keep you from enjoying it."

Choir 2,3,4. Chorale 4. Musical 1,2,3,4. Band 1,2,3,4. Pep Band 4. Stage Band 4. Pep Club 1,2. Ski Club 3. Prom Committee 3. Student Council 4. Betty Crocker Award 4.



CAROL LYNN CRAFT

"Your future is now, live for today, for tomorrow may never come."

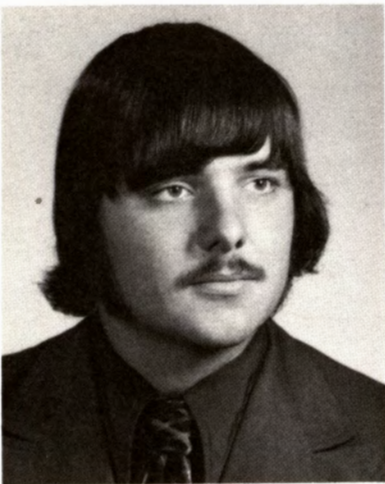
Choir 3,4. Girls Glee Club 1,2. Band 2,3,4. Track 1. Office Aide 3,4. Class Officer 1. Student Council 1. Cosmetology 3,4. Volley Ball 2.



XAEHNAE DAVIS

"Love is not put in your heart to stay; it is not love until you give it away."

Choir 3,4. Chorale 4. Girls Glee Club 1,2. Musical 3,4. Girls Basketball 1,2.



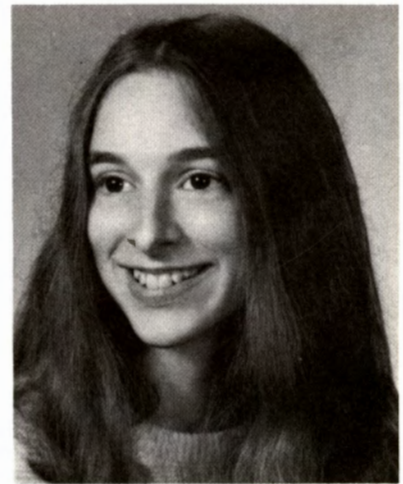
BRIAN DERSHEM

"Super Sunny Sunoco Service Station"
Football 1,2,3,4. Baseball 1. Track 3.
FFA 1,2,3,4. Ski Club 2,3,4. Debate 4.



MITCHELL KING DONLEY

"Live in the beauty of today."
Wrestling 4. Choir 4. FFA 2,3,4.



AMY DREW

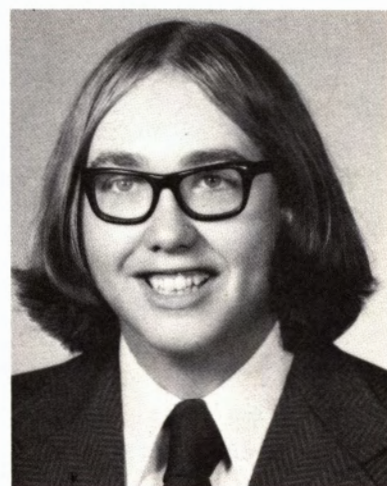
IF WORDS COULD MAKE WISHES COME TRUE



MELISSA ETTINGER "Mitzi"
"Hi there"
Choir 3,4. Girls Glee Club 2,3,4. Girls Basketball (Manager)



DEBBIE EVANS
"But this one thing I do, forgetting those things which are behind, and reaching forth unto those things which are before, I press toward the mark for the prize of the high calling of God in Christ Jesus. Philippians 3:13-14
Girls Glee Club 4.



CHRIS EVERITT



DONNA JEAN FELISKY "Jeannie"
"Don't walk in front of me, I may not follow. Don't walk behind me, I may not lead. Walk beside me and be my friend."
Choir 3,4. Girls Glee Club 2. Musical 3,4. Yearbook Staff 3,4. Ski Club 4. Office Aide 4. Honor Guard 3. Prom Committee 3. Class Officer 3. Student Advisory 4.

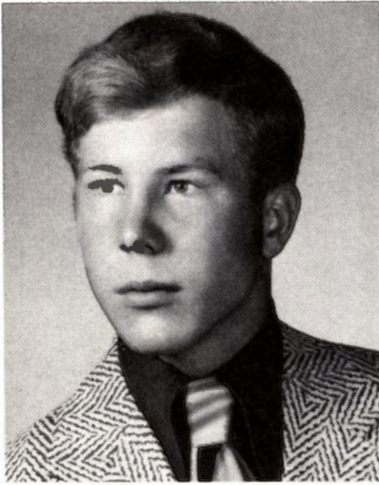


LARRY FLANNERY "Stretch"
"The reward for a thing well done is to have done it."
Football 1,2,3,4. Basketball 1,2,3,4. Baseball 1,2,3,4. All Conf. Basketball & Baseball. Choir 4. Chorale 4. Honor Guard 3. Homecoming Escort 1,4.



VICKEY FLETCHER
"Finally served my 13 years!"
Girls Basketball (Manager) 3. Girls Glee Club 4.

I'D SAVE EVERY DAY LIKE A TREASURE AND THEN,



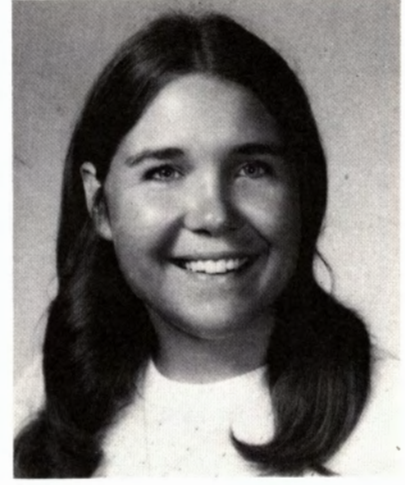
JOHN FOGG

"Success is achieved by those who try, and keep trying."
Football 1,2. Basketball 1,2. Baseball 1,2. Wrestling 3.



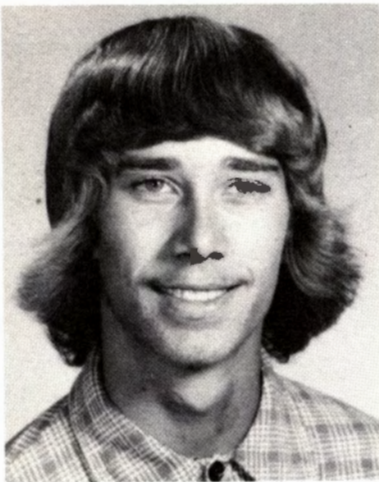
ROXANNE GLODEN

"I'm sure"
Girls Basketball 1,2,3. Glee Club 1. FFA 2,3.



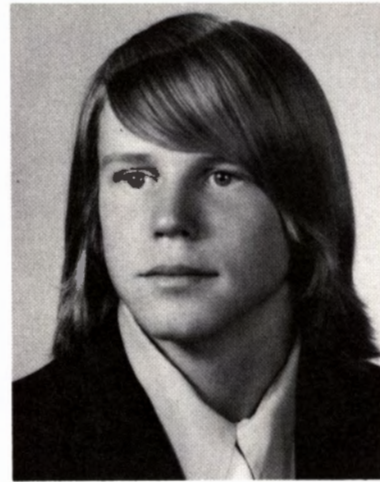
TERESA GORDON

"The main thing in life is not to be afraid to be human."
Girls Basketball 1,3. Girls Track 1. Biology Club 2. Office Aide 1. Prom Committee 3. Student Council 4.



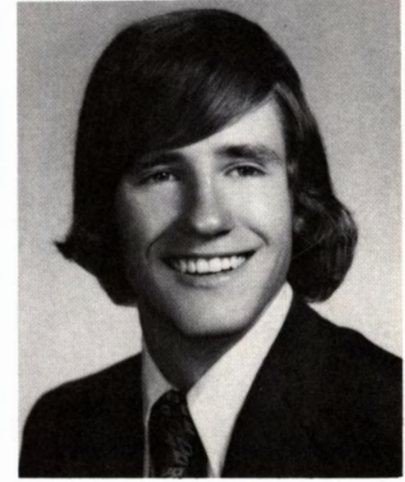
GLENN D. GRIMES

"Remember yesterday—Live today—Dream of tomorrow."
Debate.



GALE HARKNESS

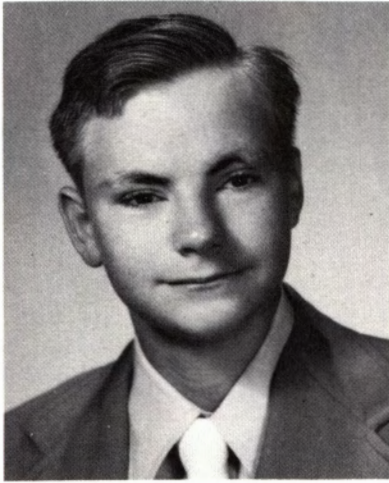
"Come on, I'll race ya."
Band 1,2,3,4.



JEFF HASKELL "Cazzie"

"That's bold"
Basketball 1,2,3,4. Cross Country 1,2,3,4. Track 2. All Conf. Cross Country 2,3. Ski Club 2,3,4. Biology Club 1,2. Honor Guard 3. Prom Server 2. Homecoming Escort 2,4. Student Advisory 4.

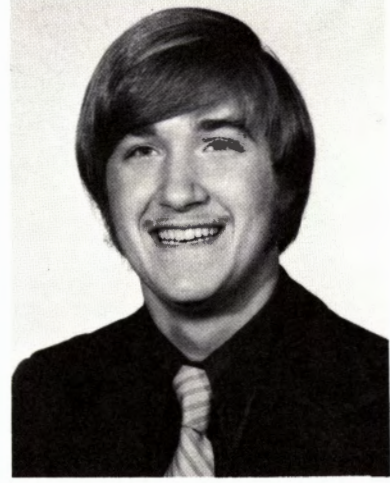
AGAIN, I WOULD SPEND THEM WITH YOU



CLYDE HATCH
 "You better get in by 10 p.m. before the
 monsters come out."
 Football 2,3,4. Basketball (Manager)
 3,4. Baseball 1,2,3,4. Pep Club 4. Ski
 Club 4. Library Aide 4.



DOUGLAS HORTON "Doug"
 "Anything's opossumable."
 Football 1,2,3,4. Wrestling 2,3,4. FFA
 1,2,3.



DON WAYNE HUMES
 "Hey!!!!!!"
 Football 1,2. Baseball 1,2. Wrestling 1,2.
 Choir 3. Band 1,2. Ski Club 3,4. Biology
 Club 1,2. Student Advisory 3.



TINA HUNTER
 "You must begin by knowing that you
 have already arrived."
 Girls Glee Club 1,2.



DORENE HYATT
 "We make our plans, but the final out-
 come is in God's hands." Proverbs 16:1.
 Student Council 1. Class Officer 2,3.
 Honor Society 2,3,4. Prom Committee 3.
 Prom Server 2. Ski Club 2,3,4. Pep Club
 1,2. Yearbook Staff 4. Cheerleader 1,2.
 Girls Basketball 4. Girls State Alter-
 nate 3.



DONALD JORDON
 Football 1,2,3,4. Basketball 1,2,3. Track
 1,2,3,4. Boys Glee Club 1. Prom Com-
 mittee 3. Honor Society 2,3,4. Class Of-
 ficer 3. Student Council 3.

IF I HAD A BOX JUST FOR WISHES

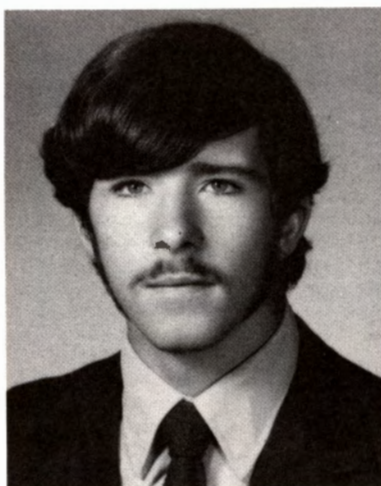


MARJORIE LYNNE JORDON

"Marj"

"The greatest kindness we can offer each other is the truth."

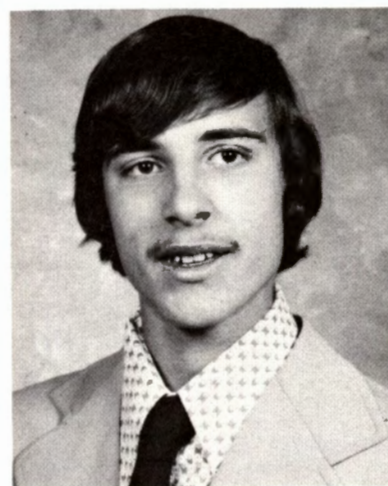
Cheerleader 1,2,3,4. Girls Track 1,2,4. Choir 2,3,4. Musical 2,3,4. Pep Club 1,2,3,4. Ski Club 2,3. Prom Committee 3. Student Council 4. Volleyball 1,2. Triple Trio 2. Fred Waring Camp 2.



DONALD LEE KEESLER

"Friends are like vitamins B-1"

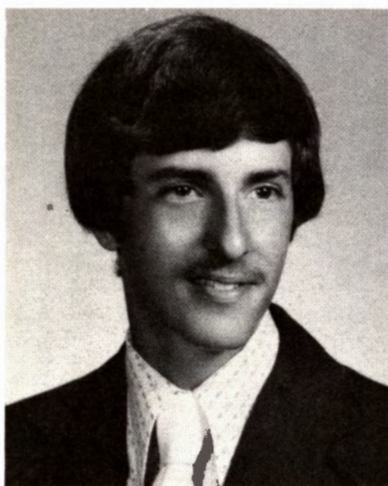
FFA 2,3,4. Boys Glee Club 1,2,4. Wrestling 1,2,3. Football 1,2.



RANDY KENNARD

"What's freakin' Freak?"

FFA 3,4. Biology Club 1,2.



MICHAEL KENT

"Let me make one thing perfectly clear."

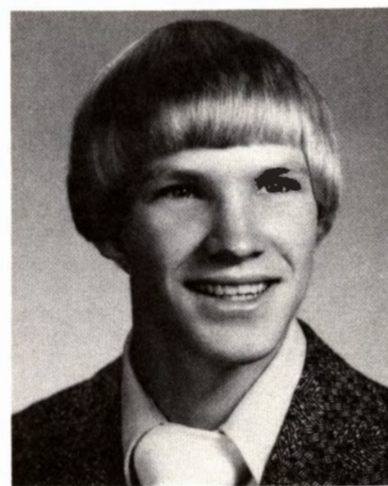
Wrestling 3,4. Band 1.



DARLENE ANN LANTZ "Neenie"

"If being different is being yourself and being yourself is being different, then be yourself to be different!"

Musical 2,3,4. Band 1,2,3. Choir, Chorale 2,3,4. Cheerleader 1. Girls Track 1,4. Girls Basketball 2,4. Hawk's Cry Staff 3,4. Prom Committee 3. Homecoming Court 3. Student Council 1. Fred Waring Camp 2,3.

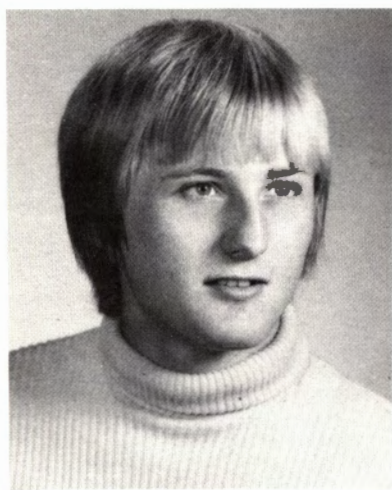


MICHAEL LANTZ "Mike"

"The more you try, the farther you will get".

Basketball 1,2,3,4. Baseball 1,2,3. Cross Country 1. Golf 4. Choir, Musicals 4. Boys Glee Club 2,3,4. FFA 4. Ski Club 2,3,4.

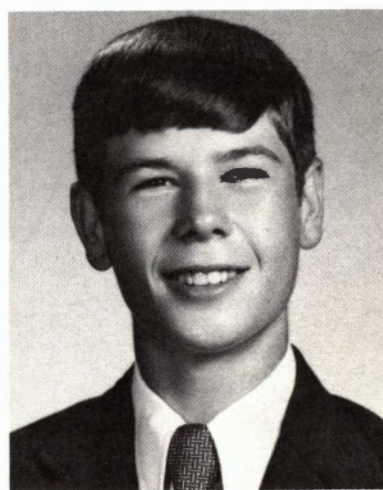
AND DREAMS THAT HAD NEVER COME TRUE



CHARLES LEWIS
"What you see is what you get."
Wrestling 1,2. FFA 4.



MARLENE LOVETTE
"Put on a happy face."
Office Aide 2,3,4. Class Queen 2.



RICHARD A. MENTINK "Richie"
"Small but mighty"
FFA 1,2,3,4. Musicals 2,3,4. Choir 2,3,4.
Chorale 3. Boys Glee Club 1,4. Baseball
1,2,3,4. Basketball 1,2. Student Council
2.



DENISE MINER "Deese"
"You fool!"
Choir 3,4. Girls Glee Club 1,2. Volleyball
2 Cosmetology 3,4.

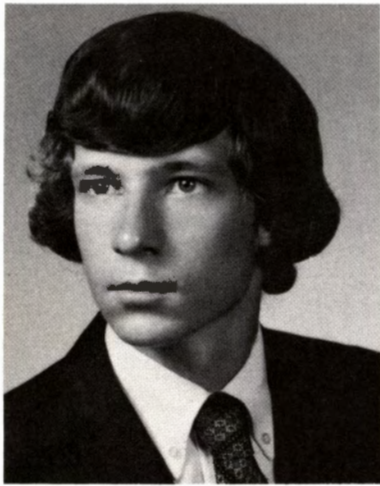


PENNY VANCE PASSICK
"Real generosity toward the future lies
in giving all to the present."
Glee Club 1,2. Hawk's Cry 4.

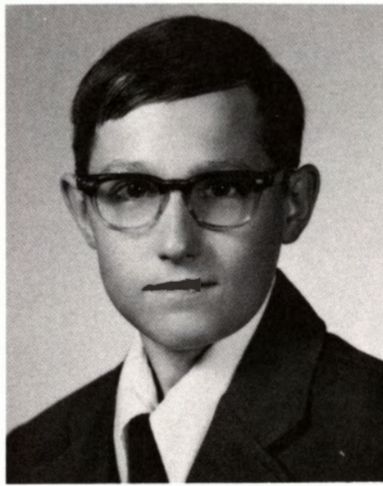


PATRICIA PAYNE "Phred"
"Almost only counts in horseshoes and
hand-grenades."
Girls Basketball 1,2,3,4. Girls Track 2.
Honor Society 2,3,4. Softball 4. Latin
Club 4.

THE BOX WOULD BE EMPTY, EXCEPT FOR THE MEMORY



HAROLD REDMAN



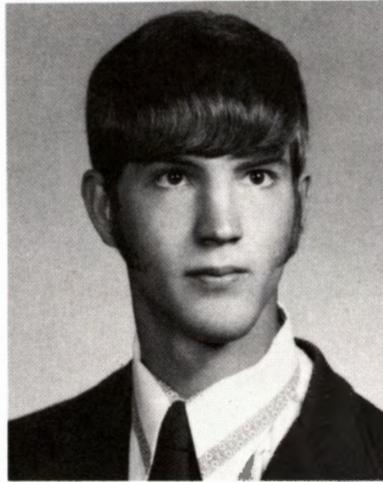
WILLIAM RUTHIG "Bill"
"May the Lord lead"
FFA 1,2,3,4.



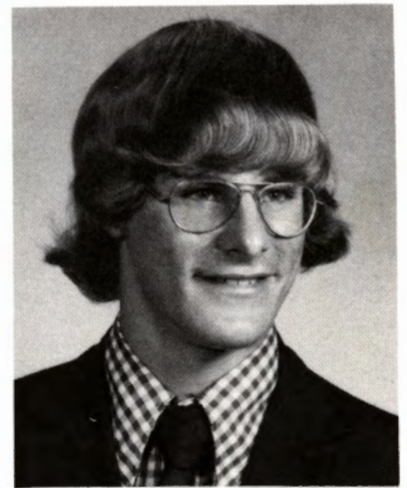
MARIE SAGER
"Let your song be heard."
Choir 2,3,4. Glee Club 1. Honor Society
2,3,4. Student Advisory 3. French Club
1.



KATHY SCHEFFLER "Sheffie"
"Real generosity toward the future lies
in giving all to the present."
Choir 2,3,4. Glee Club 1. Musical 2,3,4.
Hawk's Cry Staff 3,4. Prom Committee
3.



ROBERT DANIEL SHERRELL "Rob"
"I've been trying to open future's door
but it won't budge."
FFA 1,2,3. Biology Club 1,2. Career
Center 3,4.



DAVE SHIPMAN "Shippie"
"I don't think I'm handsome, but
what's my word compared to a thou-
sand women."
Choir, Chorale 1,2,3,4. Boys Glee Club
1,4. Musicals 2,3,4. Fred Waring Camp
4. FFA 1,2,4. Biology Club 1,2. Football
2,3,4. Basketball 3. Track 3. Class Offi-
cer 1.

OF HOW THEY WERE ANSWERED BY YOU



CHERRI SLUSSER "Cher"

"I seem very shy, but wait till you get to know me."

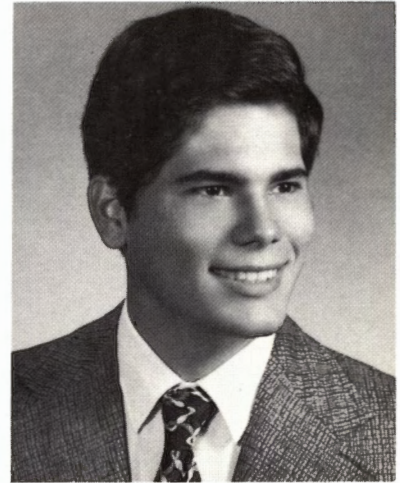
Girls Basketball 1,2. Choir 2,3,4. Chorale 4. Girls Glee Club 1. Musicals 2,3,4. FHA 1. Ski Club 2. Trip to Spain 3. Prom Committee 3. Homecoming Court 4.



DEBBIE SMID

"Challenge the right to be yourself. Dare to be different, to set your own pattern, to follow your own star."

Honor Guard 3. Prom Server 2. Prom Committee 3. Yearbook Staff 3,4. Pep Club 2. Ski Club 4. Library Aide 2,3. Office Aide 3. Band 1. Cheerleader 2. Girls Basketball 1.



JEFF SUTFIN

"Human feelings are fragile; the ways of the world are ragged."

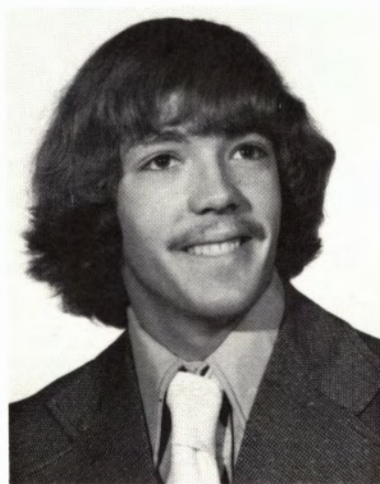
Wrestling 1,2,3. Honor Society 3,4. Student Advisory 3. Chess Club 1,2.



DIANE SUTLIFF

"How you gonna act?"

Girls Glee Club 2,3. Pep Club 1.



DEAN TAYLOR "Deano"

"Why you old rink"

Choir 1,2,3,4. Chorale 4. Boys Glee Club 1,2. Musicals 2,3. FFA 1,3. Yearbook Staff 2. Homecoming Escort 4.



TERESA JEAN THOMAS "Trese"

"Life holds many pleasures large and small. We can't begin to count them all."

Cheerleader 1,2,3,4. Choir 3,4. Chorale 4. Musicals 3,4. Band 1,2,3,4. Pep Club 2,3,4. Honor Guard 3. Homecoming Queen 4. Homecoming Court 1. Class Officer 2. Fred Waring Camp 4. Triple Trio 2.



MIKE TIENKEN

"Do unto others as you would have them do unto you. Peace Brother."
Wrestling 1. Boys Glee Club 1.



KEVIN WARD

"Our greatest glory consists not in never falling, but in rising every time we fall."
Wrestling 1,2,3,4. Baseball 1,2,3,4. Golf 2,3,4. Choir 2,3,4. Chorale 2. Boys Glee Club 2. Homecoming Escort 3. Class Officer 1. Weight Lifting 4.

BUT THERE NEVER SEEMS TO BE
ENOUGH TIME
TO DO THE THINGS YOU WANT TO
DO
ONCE YOU FIND THEM
I'VE LOOKED AROUND ENOUGH
TO KNOW
THAT YOU'RE THE ONE I WANT
TO GO
THROUGH TIME WITH



STEVE WEAVER

"Sometimes I sits and thinks, other times I just sits!"
Wrestling 2,3,4. Football 1,2,3. Track 2,3. Debate 3,4. Homecoming Escort 4.



SCOTT WHITNEY

"You moron"
Choir 1,2,3. Chorale 3,4. Musicals 2,3,4. Boys Glee Club 2. Golf 1,2,3,4. All Conf. Golf 3. Baseball 3. Football 1. Ski Club 3,4. Biology Club 1,2.



MARY ANNETTE WOODLAND

"Of all the pleasures life can bring, friendship is the sweetest thing."
Cheerleader 1,2. Band 1,2,3. Yearbook Staff 3,4. Hawk's Cry Staff 4. Pep Club 1,2. Ski Club 4. Office Aide 3,4. Honor Guard 3. Prom Server 2. Student Advisory 4. Majorette 3.



UNDERCLASSMEN

Forest Parke Library and Archives - Capital Area District Libraries

BE HAPPY

JUNIORS

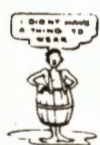
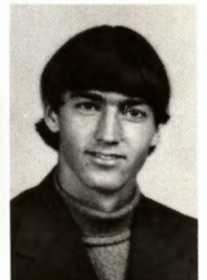


CLASS OFFICERS: President—Wanda Watters, Vice President—Sharon Ames, Secretary—Kalene Thomas, Treasurer—Jeanie Stocks.



S. Abbey
N. Adkins
S. Ames
S. Atwood
G. Baker
K. Baylis

C. Beegle
K. Beiswenger
J. Benedict
M. Bersine
L. Bigg
H. Bilaski



R. Binkley
M. Black
J. Boertman
C. Brown
S. Bryson
D. Burk



J. Chamberlain
C. Clark
K. Coppernoll
M. Coppernoll

BE BEAU- TIFUL

F. Cruth
J. Darrow
B. Darling
D. Davenport



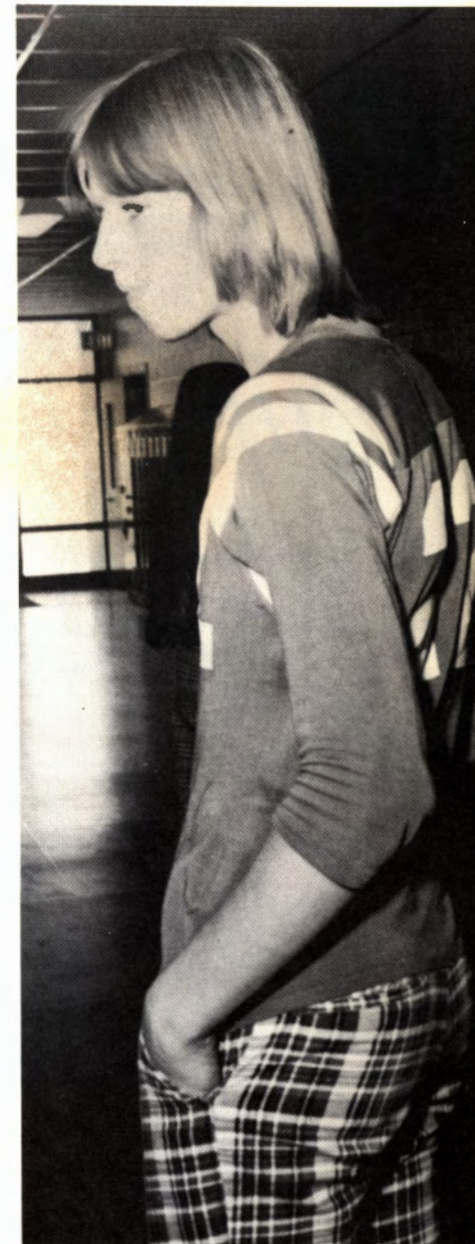
D. Davenport
S. DeBruler
D. Dershem
R. Dexter

D. Dowding
S. Doxtader
T. Dumbauld
E. Dunlap



S. Dwight
K. Eddington
B. Emens
C. Ewing

C. Flannery
L. Fogg
T. Foltz
P. Fox



B. Gallaway
B. Gallaway
A. Gordon
S. Gowanlock
L. Graham
M. Hamlin



J. Hayhoe
S. Hendershot
L. Hensley
L. Hill
M. Horton
A. Houghtaling



M. Hummel
L. Hunter
P. Jacobs
L. Jenkins
M. Johnston
J. Kaimon



HELP OTHERS WHENEVER YOU CAN



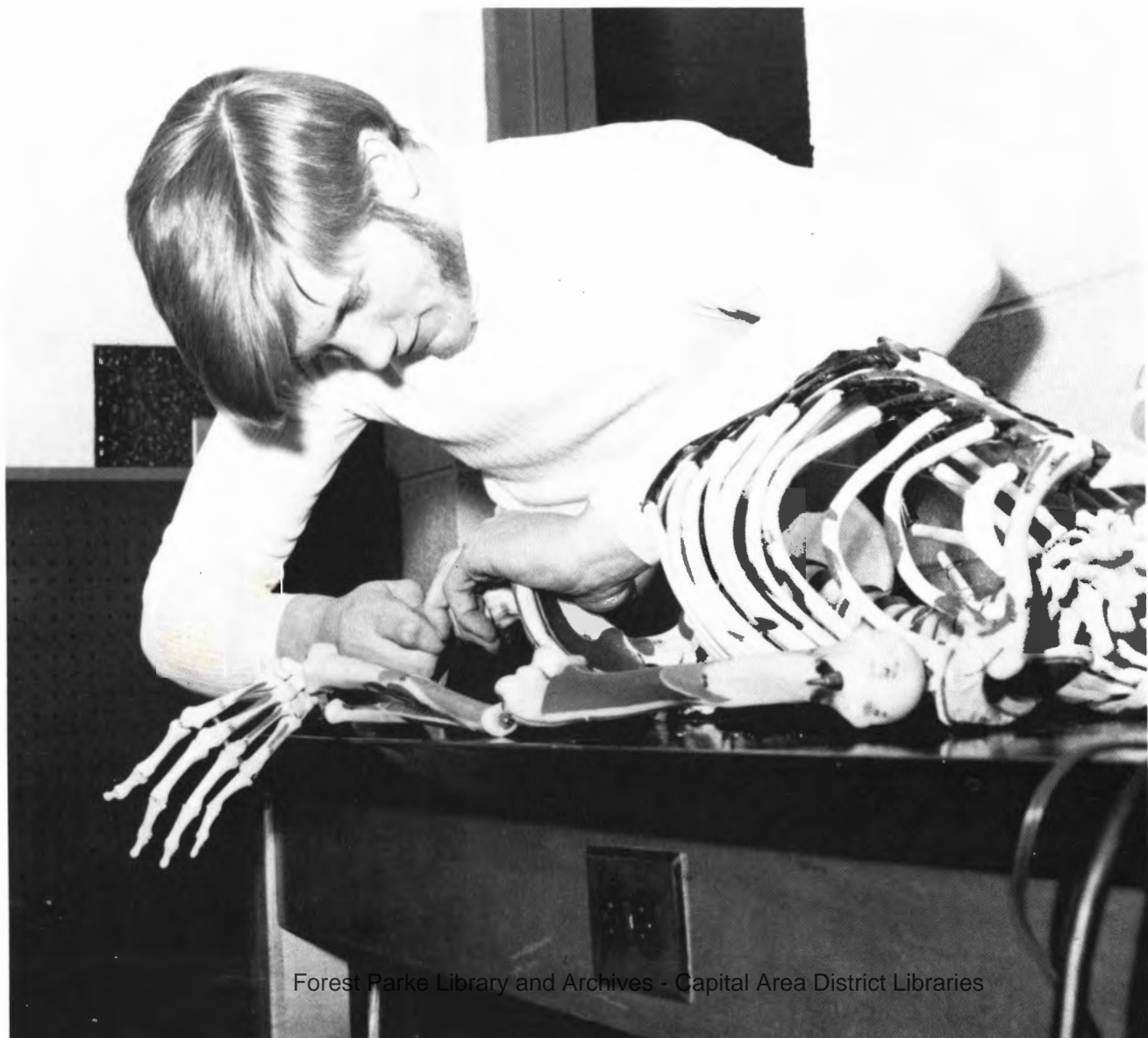


D. Kennard
R. Kilburn
B. King
B. King
T. King
D. Lawrence



S. Leach
M. Lewis
D. Lopez
B. Manthei
E. Mata
C. Mathews

LIVE FULLY EACH MOMENT



J. Mathews
C. Miller
D. Miner
L. Minix
M. Munson
C. Myers



D. Notzold
T. Olson
D. Palmer
J. Parker
P. Payne
D. Pierce



C. Porter
S. Prater
S. Prentler
D. Ragonesi
R. Ramirez
L. Read



V. Reffitt
M. Reeve
S. Rhines
B. Rockwell
A. Rogness
M. Ruthig



*CHERISH
OTHERS*





AND YOURSELF



L. Schaefer



C. Schultis
C. Smith
G. Stevens
L. Steward
J. Stocks
C. Sutliff



K. Thomas
D. Valentine
J. Vaughn
D. Waldron
J. Waldron
G. Warner



W. Watters
A. Wildey
K. Wilkinson
J. Williams
J. Wright
K. Wright

HAVE A GOOD DAY

SOPHOMORES



CLASS OFFICERS: Vice President—Ralph Ramirez, Secretary—Joy Schmit, President—Mike Sutfin, Treasurer—Kerry Frey



M. Adams
L. Albro
M. Ambs
A. Ames
A. Arbuckle
G. Arras

M. Back
G. Barratt
R. Barnett
G. Bauman
S. Beiswenger
S. Beuthin

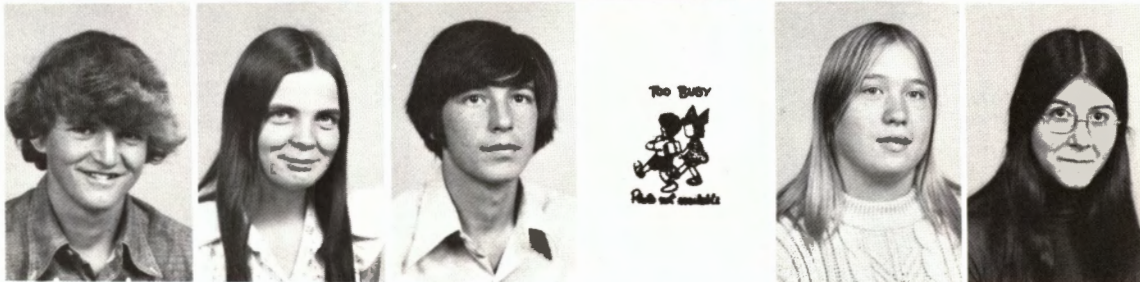


S. Bidelman
C. Bigg
K. Bilaski
T. Boertman
M. Bogart
D. Bowen



C. Brockett
D. Bugbee
R. Bush
R. Bush
M. Chesney
B. Clothier

E. Cox
L. Cox
M. Cruth
J. Cummings
A. Darling
K. Davenport



R. Donley
D. Drumm
W. Eddington
R. Edwards
K. Engel
C. Ettinger

N. Evans
M. Fancher
T. Fellows
M. Fletcher
M. Fletcher
D. Franz



*TAKE TIME
TO SMELL
THE
FLOWERS*

K. Frey
J. Garner
D. Gibbs
W. Gibbs
J. Gloden
R. Grieves



T. Grimes
C. Hanson
J. Harkness
V. Harmon
J. Hayhoe
E. Haynes



M. Haywood
P. Haywood
T. Herron
J. Hoffman
R. Hoskins
K. House



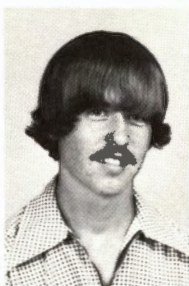
LISTEN TO THE MUSIC OF THE EARTH

J. Huey
R. Humes



J. James
D. Johnson





R. Johnson
L. Keith
J. Kemble
K. Kennard
M. Kent
K. King



S. King
B. Knight
J. Kranz
D. Kulka
C. Lee
L. McQueen



S. Maiville
L. Makin
J. Manthei
B. Mata
L. Modert
K. Modert



LET YOURSELF GLOW



M. Morse
G. Mulnix
W. Munson



S. Munson
S. Mussell
M. Nutt

R. Ousley
T. Ousley
D. Page
S. Palmer
D. Piper
D. Pitts



C. Post
D. Prentler
T. Rae
R. Ramirez
A. Raymond
P. Redman



S. Reffitt
D. Ross
V. Saddler
J. Sartin
J. Schmit
T. Schipper



S. Scheffler
S. Simons
F. Smith
M. Smith
C. Snow
D. Snyder



*BE ALL
YOU CAN
BE*





THIS IS YOUR DAY



D. Spradlin
L. Steward
M. Stocks
M. Sutfin
J. Swiler
D. Taylor

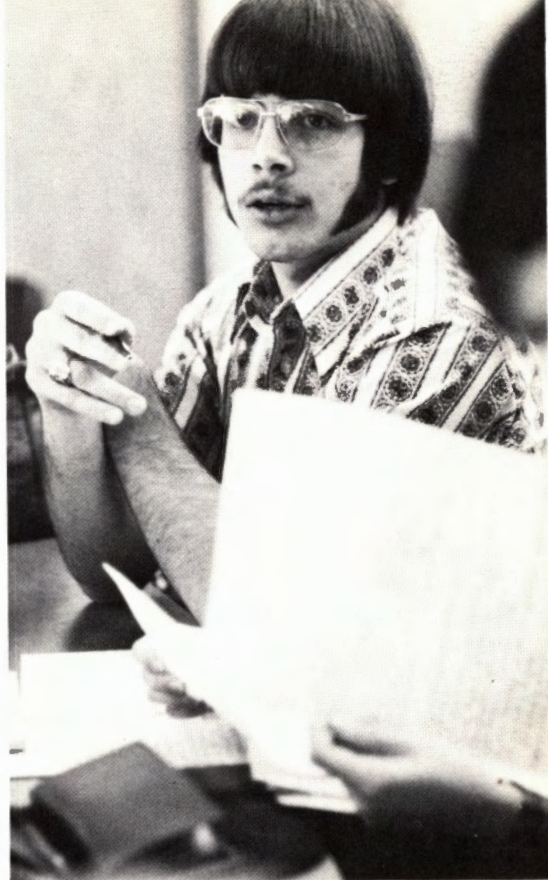


D. Toburen
S. Todd
J. Vacek
J. Valentine
K. VanVorst
D. Ward



T. Walters
M. Watters
M. White
B. Wildey
B. Wildey
D. Wood





ACTIVITIES



HAWK'S CRY: Seated—A. Houghtaling, Mrs. Bissell, D. Lantz. 2nd. Row—R. Ramirez, A. Ames, S. Reminga, C. Porter, P. Passick, J. Stocks, T. King, M. Woodland. 3rd. Row—D. Valentine, T. Foltz, M. Watters, B. Parker, R. Bush, K. Scheffler, S. Beuthin.

FUTURE FARMERS OF AMERICA: 1st. Row—C. Ettinger, Mr. McDaniels, T. Olsen, M. Ruthig, E. Dunlap, S. Dwight, W. Emmons, R. Barnett. 2nd Row—J. Swiler, M. Fancher, B. Mata, J. James, R. Bush, W. Munson, R. Ramirez, B. Ruthig, D. Bugbee. 3rd. Row—R. Mentink, R. Kennard, K. Wright, G. Arras, R. Hoskins, M. Donley, M. Haywood, L. Bunker, R. Dexter. 4th. Row—M. Blume, T. Dumbald, G. Warner, J. Cusley, L. Keith, C. Lewis, M. Lantz, D. Wood, J. Kranz. 5th. Row—M. Fletcher, M. Horton, A. Raymond, D. Keesler, G. Stevens, G. Bauman, J. Vaughn, D. Pitts, T. Herron, G. Barnett.





PEP CLUB: 1st. Row—Mr. Chapman, S. Rhines, B. Parker, A. Gordon, Mrs. Wilson. 2nd. Row—L. Steward, K. Baylis, M. Jordon, T. Bigg, C. Hatch, D. Bugbee. 3rd. Row—L. McQueen, L. Minix, C. Brockett, B. Grieves, A. Ames. 4th. Row—J. Wright, T. Thomas, S. Ames, K. Thomas.

OFFICE AIDES: M. Woodland, Mr. Byrum, D. Felisky, Mrs. Burnette, T. Thomas, S. Hatch, C. Craft.





DEBATE: Seated—B. Baylis, Mrs. Webb, C. Shultis. Standing—M. Sutfin, J. Parker, S. Weaver.

FFA OFFICERS: Seated—E. Dunlap, Mr. McDaniels, S. Dwight.
Standing—W. Emmons, M. Ruthig, T. Olsen.



LIBRARY AIDES: K. Bartlett, Mrs. Byndrian, L. Hunter.





SKI CLUB: Kneeling—D. Humes, G. Mulnix. Seated—Mr. Miller, S. Todd, K. House, J. Swiler, B. Wildey, M. Woodland, D. Hyatt, D. Kilka, D. Smid. Standing—S. Beiswenger, S. Scheffler, J. Hoffman, P. Redman, S. Whitney, B. Baylis, A. Rogness, C. Chamberlain, B. Dershem, B. Eddington, T. Bigg, C. Ewing, J. Haskell, C. Hanson, D. Felisky, M. Lantz, B. Rockwell, K. Eddington, S. Beiswenger, J. Hayhoe.

HONOR SOCIETY: 1st. Row—D. Hyatt, M. Maiville, D. Jordon, S. Reminga. 2nd. Row—M. Sager, P. Payne, Mrs. Byndrian, W. Watters, A. Houghtaling. 3rd. Row—B. King, B. Parker, A. Rogness, J. Parker.





HONOR SOCIETY INITIATES

WHAT YOU ARE IS GOD'S GIFT TO YOU—
WHAT YOU MAKE OF YOURSELF
IS YOUR GIFT TO GOD





STUDENT ADVISORY: In Chairs—C. Smith, B. Grieves, M. Woodland. On Tables—J. Hayhoe, D. Ragonesi, M. Stocks, K. Baylis, B. Wildey, D. Felisky. Standing—C. Shultis, D. Bowen, D. Wright, J. Haskell.

STUDENT COUNCIL: 1st. Row—R. Church, B. Parker, Mrs. Webb, S. Reminga, A. Houghtaling. 2nd. Row—R. Ramirez, M. Jordon, S. Rhines, C. Flannery, W. Watters, J. Mathews, J. Schmit. 3rd. Row—C. Chamberlain, M. Sutfin, K. Frey, D. Beegle, J. Manthei, B. Clothier, C. Shultis.





Mr. Berz, Director



BAND OFFICERS: B. Parker, J. Stocks, B. Grieves

BAND: 1st. Row—L. Brattain, D. Ragonesi, J. Mathews, S. Leach, L. Smith, J. Eddington, M. Coppernoll, S. Reminga, K. Frey, T. Thomas, J. Schmit, B. Belanger, K. Jordon, S. Rhines. 2nd. Row—D. Kulka, B. King, K. Thomas, P. Redman, A. Wildey, K. Bartlett, S. DeBruller, K. VarVorst, C. Baylis, M. White, M. Herron, J. Kemble, C. Brockett, B. Grieves, A. Houghtaling, J. Parker, R. Church, B. Clothier. 3rd. Row—J. Stocks, J. Gloden, P. Payne, S. King, M. Reeve, C. Chamberlain, W. Watters, D. Bowen, J. Kaimon, J. Hayhoe, T. Herron, E. Slusser, D. Wood, J. Kranz, S. Beiswenger, M. Stocks, C. Hanson, B. Parker, M. Watters, G. Mulnix, B. Galloway, S. Ames, K. King. Percussion—C. Shultis, B. Eddington, K. Thomas, J. Lynch. 4th. Row—M. Munson, C. Mathews, J. James, M. Fancher.





MAJORETTES: C. Chamberlain, D. Kulka



MAJOR: A. Houghtaling

GIRLS SEXTET: C. Smith, J. Wright, W. Watters, S. Rhines, K. Thomas, J. Mathews





CHOIR: 1st. Row—Mrs. Crane, D. Lantz, J. Mathews, J. Stocks, T. Thomas, S. Rhines, K. Thomas, S. Prentler, S. Henderson, J. Kaimon, P. Jacobs. 2nd Row—D. Pierce, D. Miner, M. Jordon, C. Craft, W. Watters, C. Coppernoll, C. Miller, S. Darrow, C. Smith, L. Bigg, D. Miner, L. Brattain, M. Ettinger, S. Whitney. 3rd. Row—R. Mentink, D. Ragonesi, X. Davis, M. Sager, K. Baylis, K. Scheffler, C. Slusser, L. Steward, C. Flannery, C. Myers, R. Church, T. Bigg, D. Felisky, J. Wright, K. Ward. 4th Row—L. Hunter, T. Rae, A. Houghtaling, R. Brown, J. Boertman, C. Bigg, D. Wright, L. Flannery, D. Shipman, J. Parker, B. Baylis, J. Williams, D. Taylor, D. Dershem, D. Ames.

BOYS GLEE CLUB: 1st. Row—L. Bunker, R. Mentink, D. Pierce, J. Valentine. 2nd Row—D. Ames, R. Brown, D. Keesler, D. Dershem, T. Rae. 3rd. Row—M. Lantz, D. Shipman, C. Bigg, D. Wright.

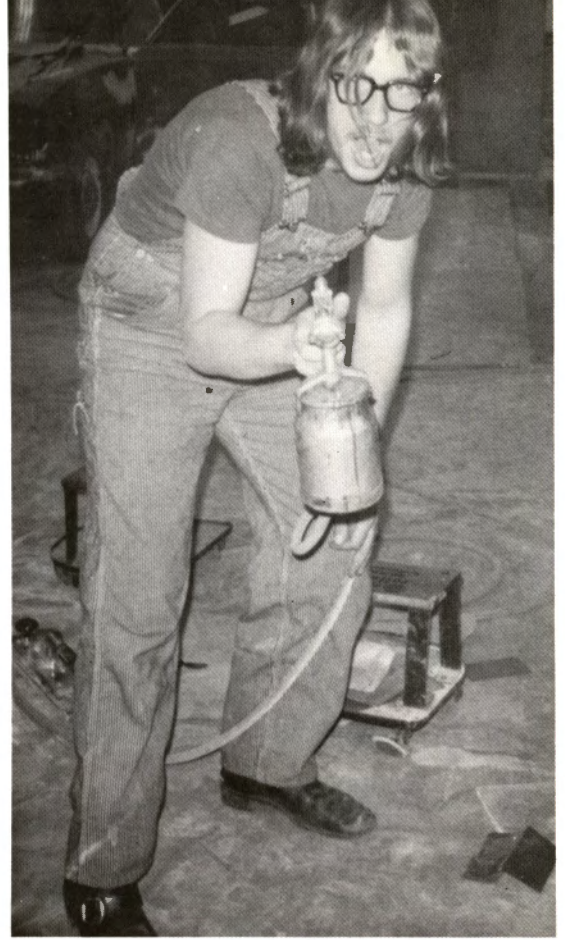




GIRLS GLEE CLUB: 1st. Row—R. Barnett, J. Kaimon, M. Morse, J. Garner, D. Bugbee, J. Swiler, V. Saddler. 2nd Row—T. Walters, S. Gowanlock, L. Steward, D. Evans, S. Bryson, D. Prentler, K. Engel, S. Henderson.

CHORALE: On Floor—D. Pierce, D. Lantz, S. Whitney, R. Church, A. Houghtaling. 1st. Step—J. Stocks, D. Wright, D. Dershem, L. Brattain. 2nd Step—J. Boertman, C. Flannery, D. Shipman, D. Ragonesi, C. Slusser, L. Flannery, T. Thomas, D. Taylor.





CAREER CENTER



A black and white photograph of a football player and a cheerleader. The player, on the left, is wearing a light-colored jersey with "HANKS" and the number "85" on the back. He is looking towards the cheerleader. The cheerleader, on the right, is wearing a dark dress, a tiara, and a choker, and is holding a bouquet of flowers. She is smiling at the player.

Homecoming Queen Theresa Thomas and Escort Larry Flannery



Freshman Float—4th. Place

Class Queen Sally Hatch and Escort Steve Weaver



Senior Princess Cheryl Chamberlain and Escort Jeff Haskell

72 Homecoming Queen Sandy Beuthin

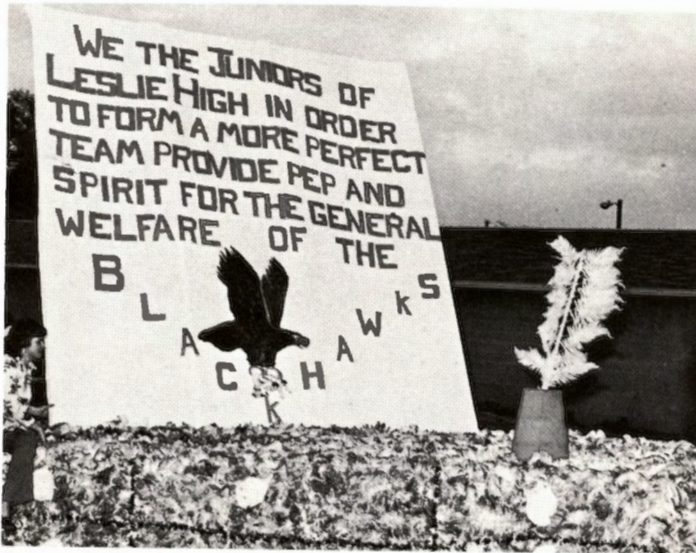


Sophomore Float—1st. Place



Senior Princess Cheri Slusser and Escort Dean Taylor

Junior Princess Kalene Thomas and Escort Steve Dwight

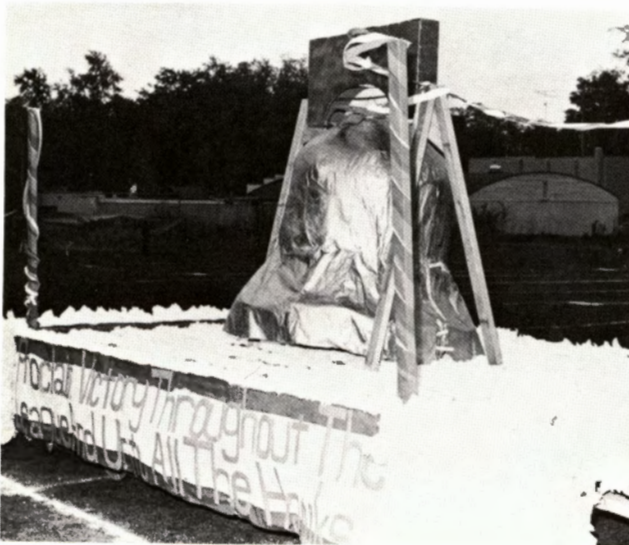


Junior Float—3rd. Place

Sophomore Princess Joy Schmit and Escort Jeff Manthei



Senior Float—2nd Place

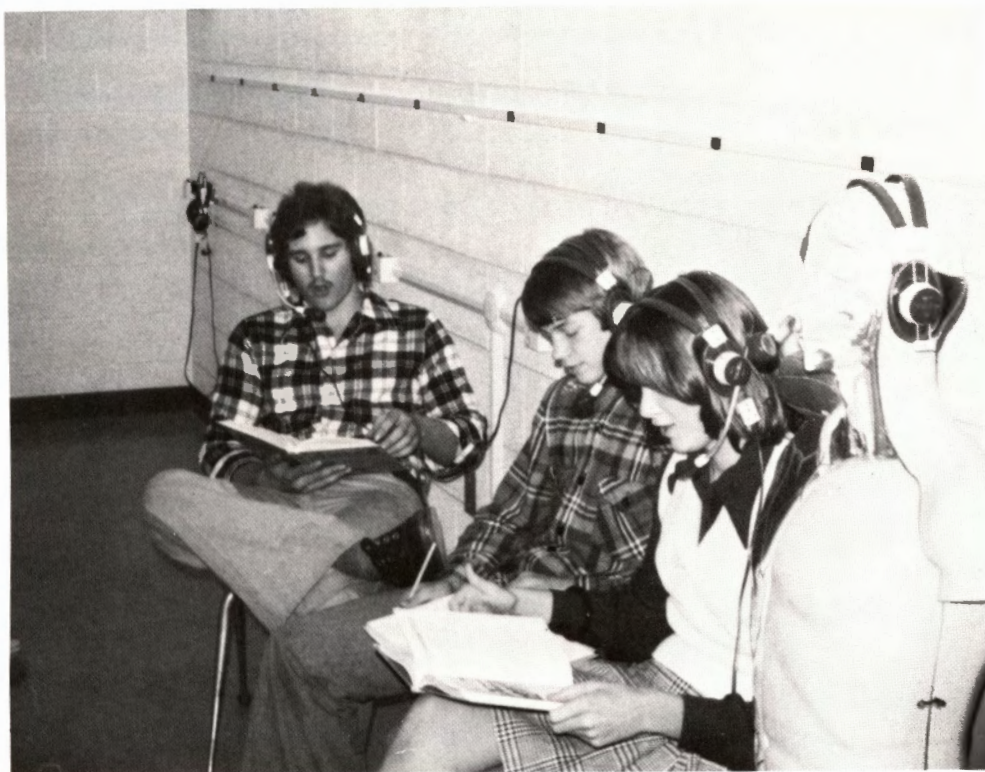


Freshman Princess Lori Smith and Escort Steve Rybicki





LATIN CLUB: Seated—P. Payne, K. Jordan, L. Smith, L. Wheeler, S. Wilcenski, E. Mata. Standing—Mrs. Jordon, K. Baylis, D. Jordon, A. Gordon, C. Post, S. Ames, W. Watters.



C A S T

(in order of appearance)

Maria Rainer. . .A Postulant at Nonnberg Abbey. . .	Julie Wright
	Darlene Lantz
Sister Berthe. . . .Mistress of Novices.	Dawn Ragonesi
Sister Margaretta. Mistress of Postulants. . . .	Kalene Thomas
The Mother Abbess.....	Donna Felisky
	Cherri Slusser
Sister Sophia.....	Janice Kaimon
Captain Georg von Trapp.....	Dave Shipman
	Dennis Wright
Franz, the butler.....	Scott Whitney
Frau Schmidt, the housekeeper.....	Cindy Smith
Liesl	Teresa Thomas
Friedrich	Eugene Back
Louisa	Gayle Abbey
Kurt	Children of Captain von Trapp
Brigitta	Mike James
Marta	Robin Losey
Gretl	Deanna Dunnings
	Lynn Bodell
Rolf Gruber.....	Alan Houghtaling
Elsa Schraeder.....	Tracy Bigg
Ursula.....	Jeanne Stocks
Max Detweiler.....	Chris Shultis
Herr Zeller.....	Bill Baylis
Baron Elberfeld.....	Mike Stocks
A Postulant.....	Lori Brattain
Admiral von Schreiber.....	Chris Bigg
Frau Zeller.....	Sharon Rhines
Baroness Elberfeld.....	Wanda Watters

Neighbors of Captain von Trapp: Debbie Valentine-Jeff Johnson
Chris Myers-Todd Rae
Jeanne Stocks-Jeff James
Cathy Coppernoll-Jim Parker

Nuns' Chorus:

Debbie Burk
Lori Brattain
Xaehnae Davis
Becky Grieves
Janette Mathews

Taped music was performed by the Girls' Glee Club and Choir

Sound

OF

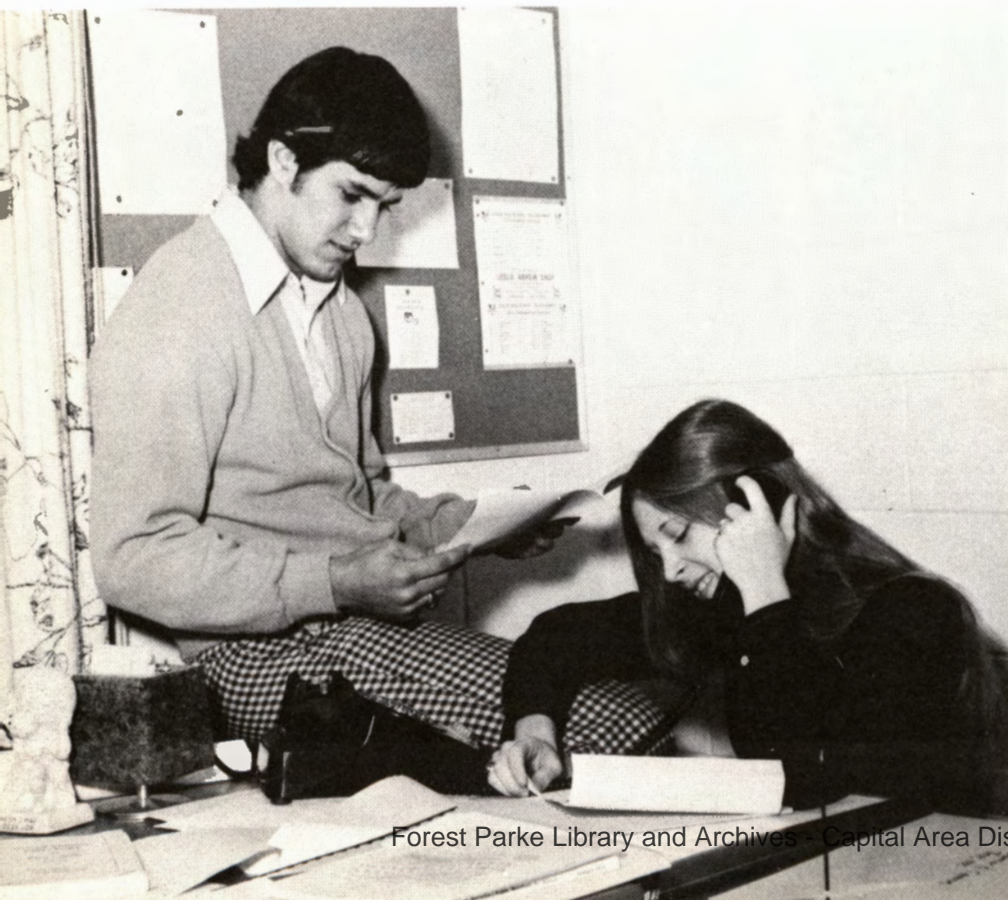
Music







Best Looking:
Larry Flannery and
Donna Felisky



Best All Around:
Dalton Beegle and
Mary Woodland



Best Dancers:
Debbie Smid and
Dennis Wright



Most Unpredictable:
Xaehnae Davis
and Mike Lantz

Friendliest:
Theresa Thomas and
Richard Mentink



Most Likely To Succeed:
John Fogg and
Marie Sager





Best Dressed:
Sue Reminga
and Don Jordon



Most Courteous:
Robin Baer and
Bill Ruthig



Most Dependable:
Cheri Slusser
and Bill Baylis

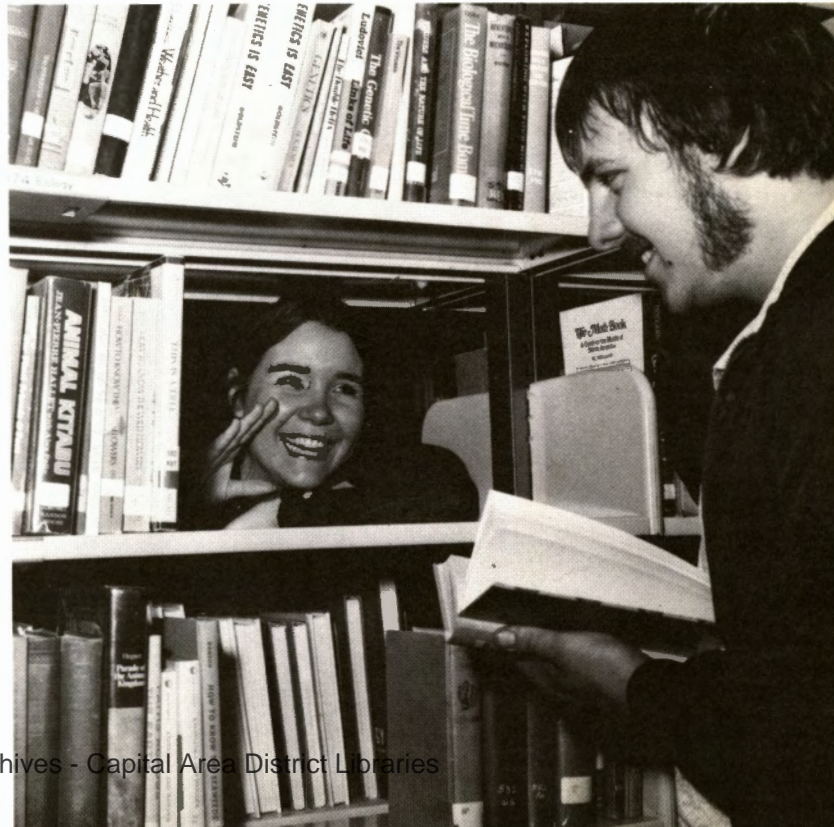


Class Clowns:
Dave Budd and
Darlene Lantz



Most Likely To Blush:
Kevin Ward and
Pat Payne

Most Talkative:
Teresa Gordon and
Brian Dershem



Best School Contributors:
Robin Church and
Bill Parker



Most Flirtatious;
Tracy Bigg and
Dean Taylor





Happy-Go-Lucky:
Tina Hunter
and Cary Howard



Best Body:
Steve Weaver
and Diane Sutliff



Most Sincere:
Mitch Donley and
Denise Miner



Scatter Brain:
Dorene Hyatt and
Mike Tienkin



Worst Temper:
Mitzi Ettinger and
Don Humes



Most Talented:
Dave Shipman
and Lori Brattain

Most Popular:
Jeff Haskell and
Cheryl Chamberlain



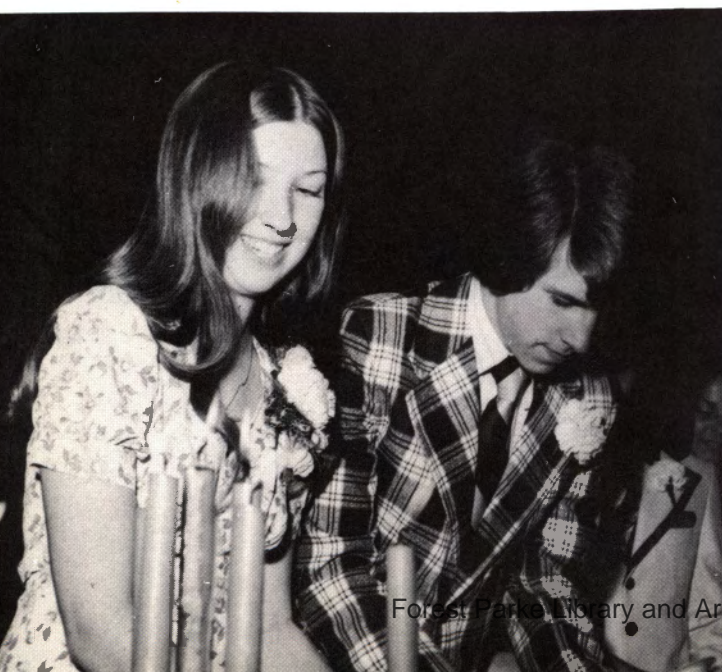
PROM 74













CAMPUS DAY





Who will represent us in Washington,
Democrat Carr or Republican Ballanger?

Bill Parker—Valedictorian and Readers Digest Award



Sue Reminga—Salutatorian and D.A.R. Award



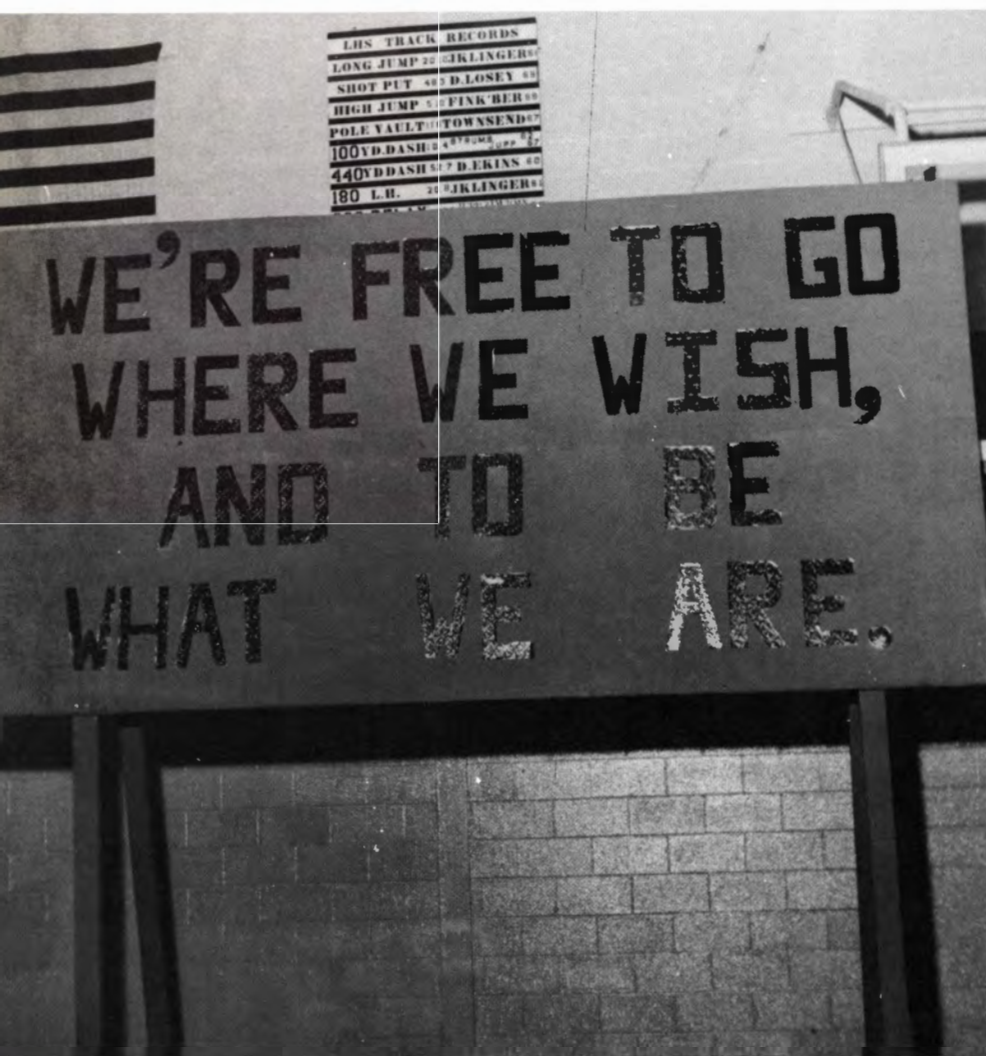
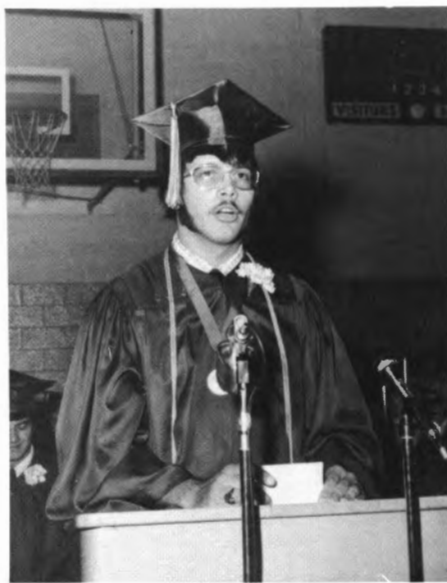
Class History is read by Robin Church and Don Jordon

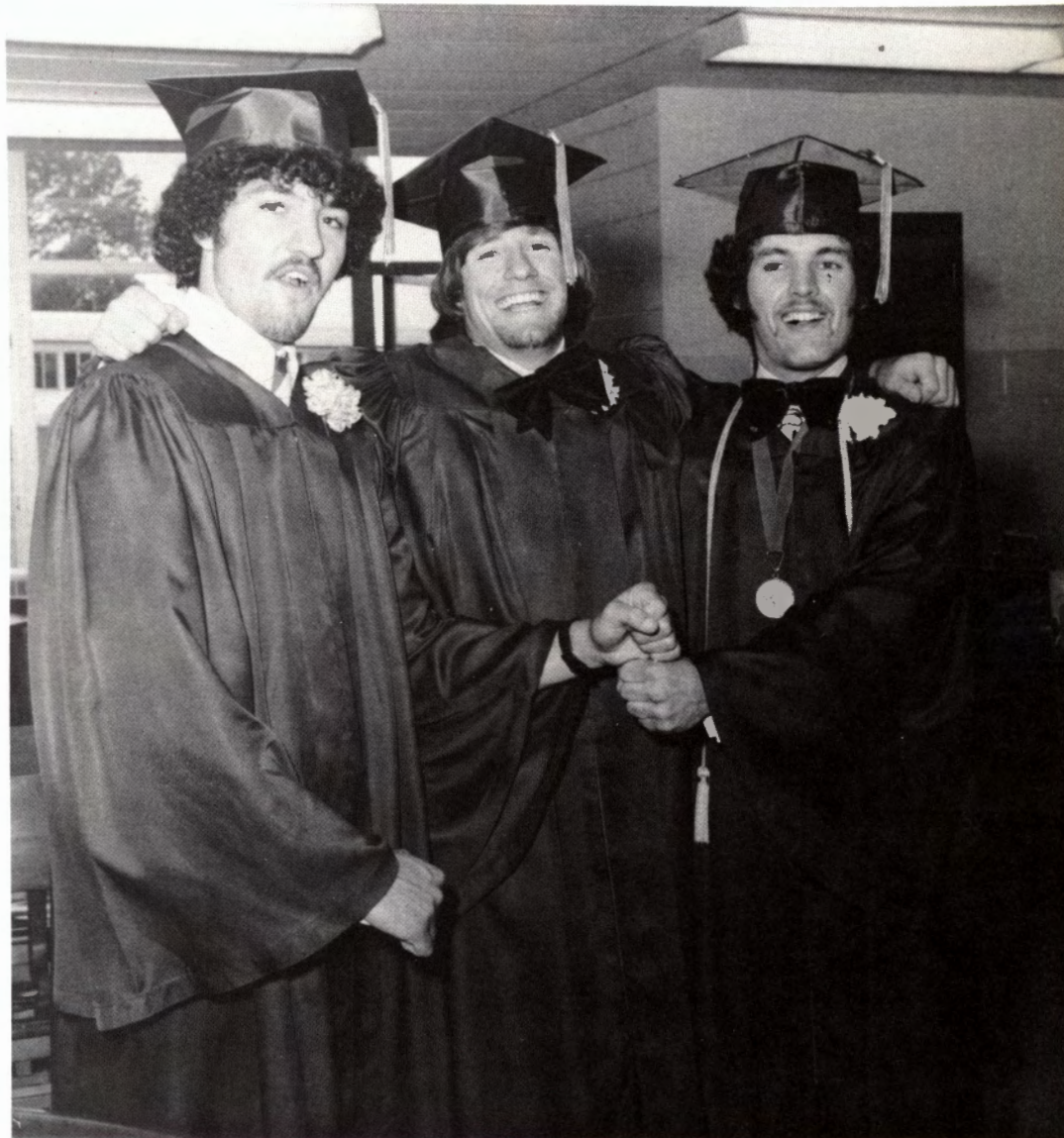
Ag Award goes to Bill Ruthig

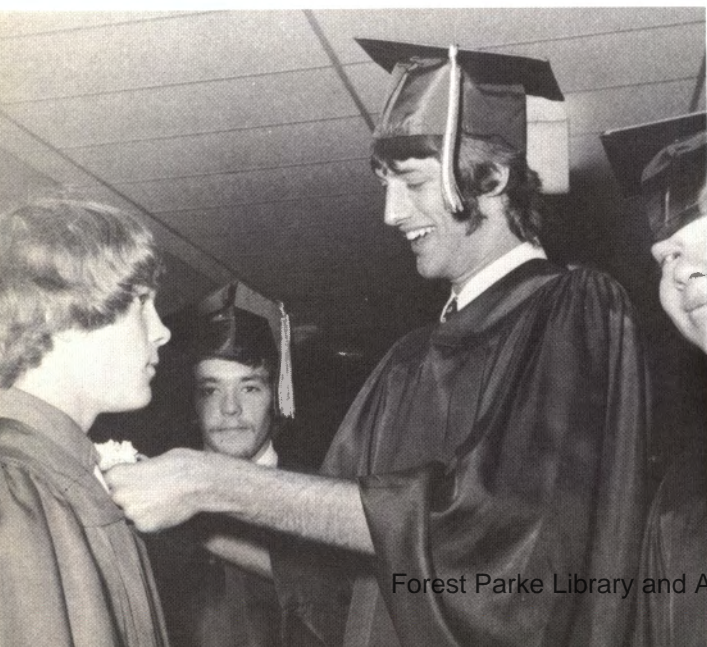
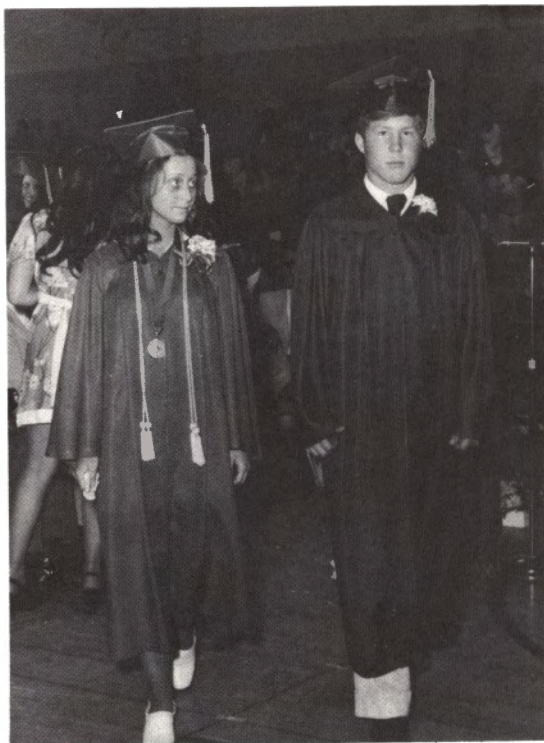
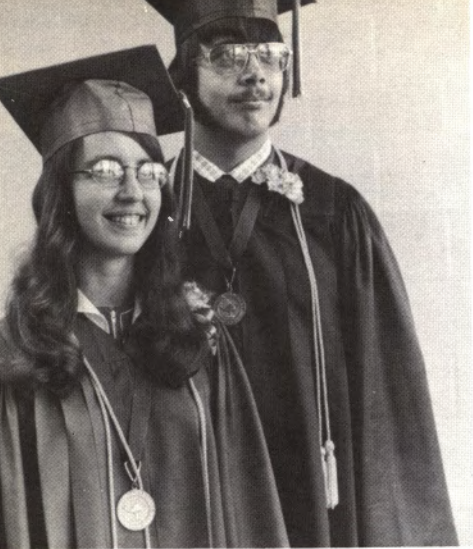


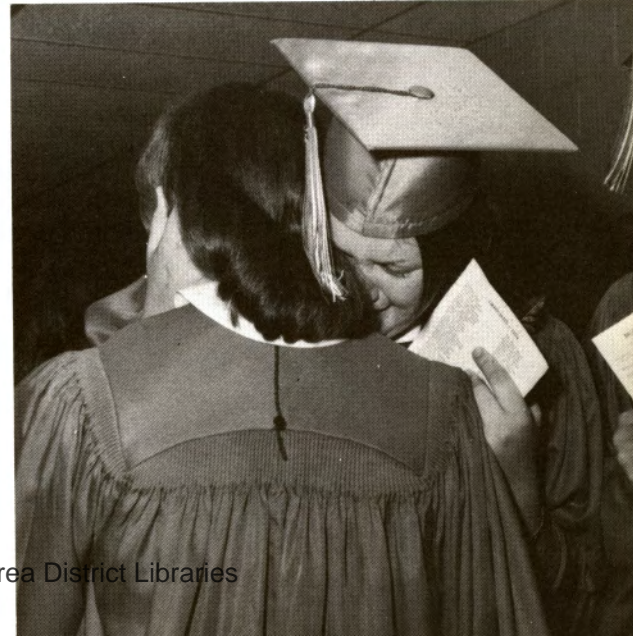
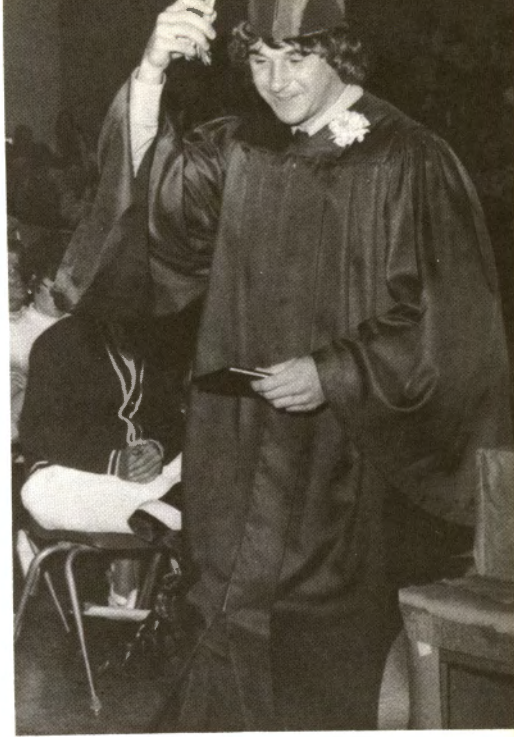
Baccalaureate message by Rev. Sparks

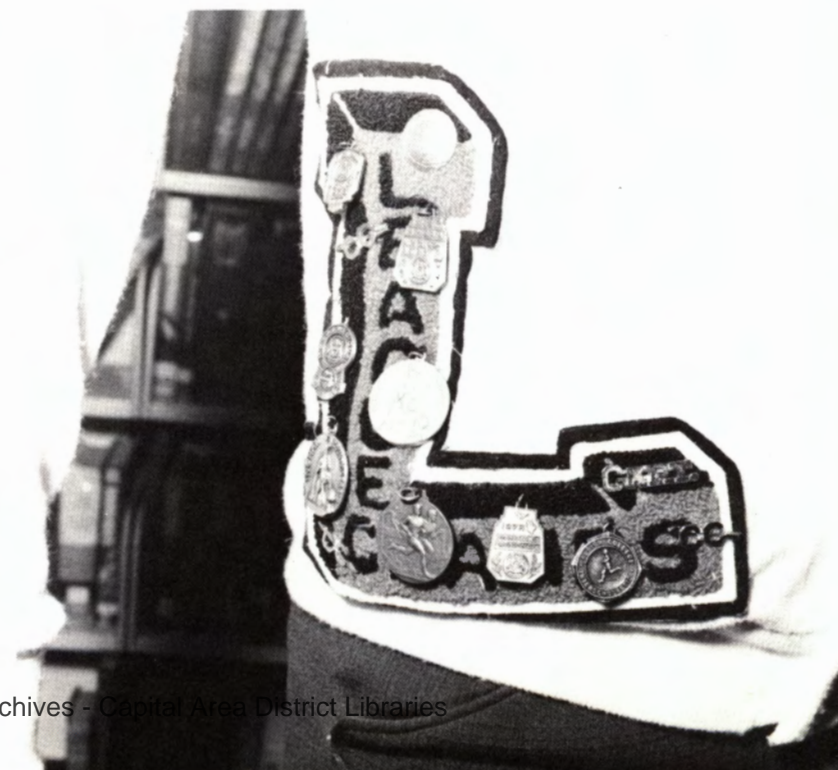
Spade is passed from outgoing Senior President Dennis Wright to new Senior President Allen Houghtaling

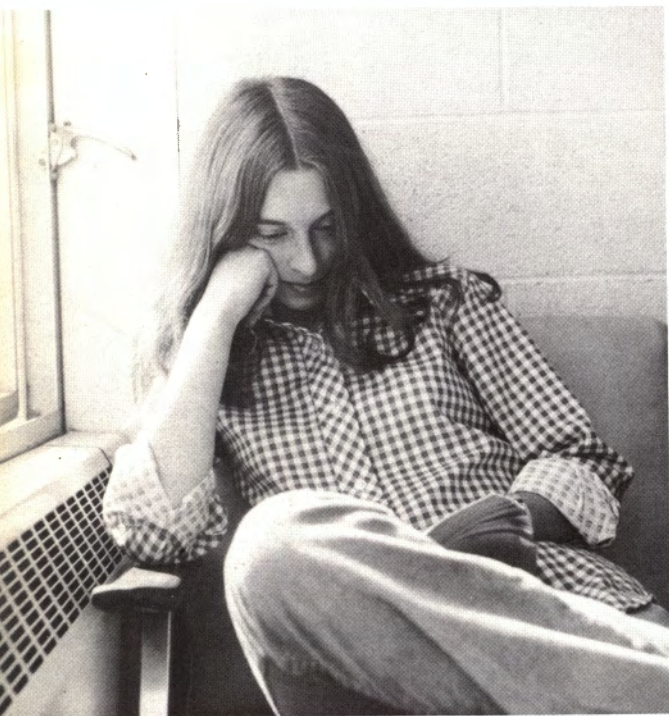
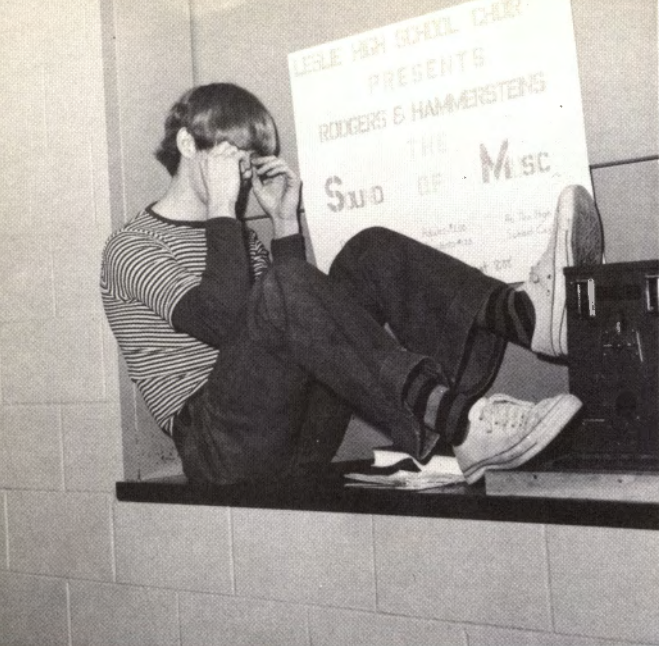














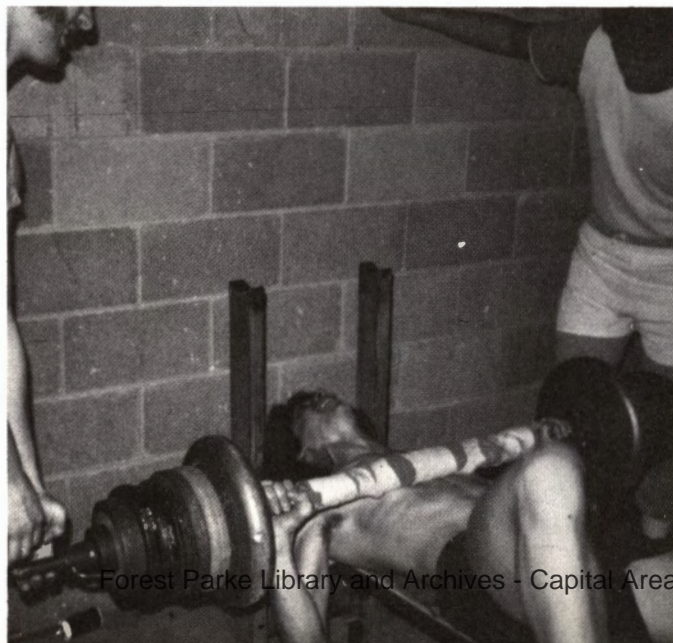




SPORTS



CROSS COUNTRY: M. Edwards, J. Haskell, B. Rockwell, C. Beegle, D. Pierce, M. Sutfin, R. Edwards. Not pictured—J. Boertman.



MR. AMERICA CLUB: C. Howard, K. Ward, F. Cruth, D. Beegle.





GOLF: Seated—S. Whitney, K. Ward. Standing—M. Fletcher, M. Hanson, D. Wood, M. Lantz, Coach Collins.

TENNIS CLUB: 1st. Row—J. Valentine, R. Humes, S. Whitney, S. Beuthin, M. Hamlin, G. Mulnix. 2nd. Row—R. Binkley, J. Wright, L. Fogg, Coach Lewis, D. Bergmann, C. Post, D. Humes.

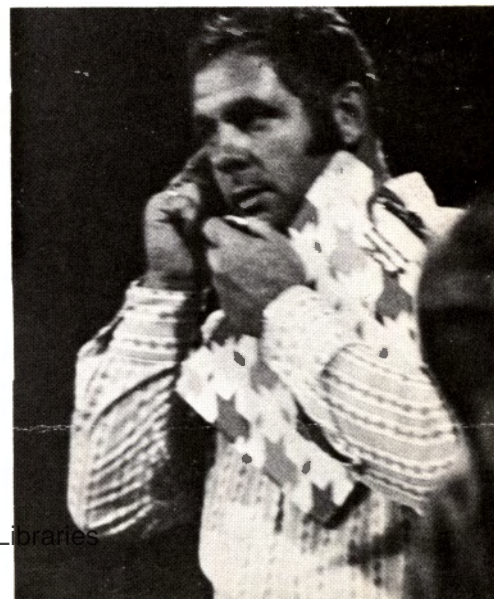




VARSITY FOOTBALL: 1st. Row—Coach VanDyke, D. Dershem, C. Hatch, S. Dwight, F. Cruth, T. Dumbauld, D. Ames, Coach Schaar. 2nd row—L. Bunker, D. Jordon, D. Wright, C. Bigg, G. Bauman, D. Beegle (co-captain), C. Howard (co-captain), C. Ewing. 3rd. Row—D. Budd, J. Vaughn, D. Horton, L. Flannery, A. Rogness, D. Shipman, J. Benedict.

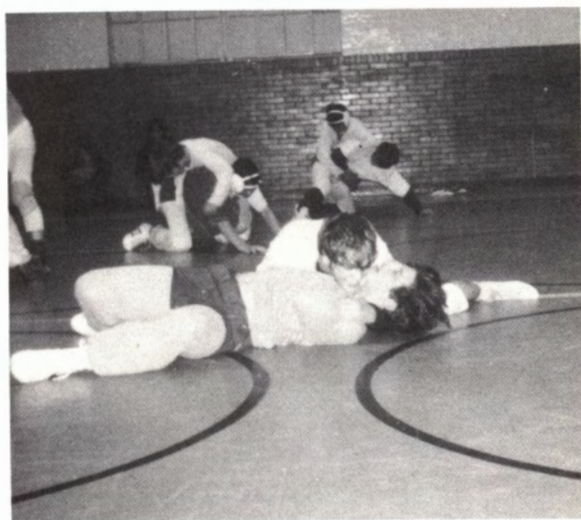


J.V. FOOTBALL: 1st. Row—Coach McDaniels, J. Huey, J. James, M. Stocks, G. Arras, R. Humes, J. Mata. 2nd Row—Coach Wheaton, D. Toburen, J. Manthei, D. Page, T. Rae, B. Clothier, M. Haywood. 3rd. Row—M. Watters, C. Snow, M. Cruth, B. Eddington, K. Frey, D. Pitts.





WRESTLING: 1st row—Coach Hanson, R. Ramirez, J. James, K. Ward, M. Sutfin, D. Ames, R. Humes, J. Mata, Coach Boyce. 2nd row—C. Mathews, S. Weaver, M. Horton, D. Horton, R. Brown, T. Rae, M. Donley.





GIRLS BASKETBALL: 1st row—D. Lantz, P. Jacobs, D. Hyatt. 2nd row—B. Wildey, J. Swiler. 3rd row—Coach Wilson, M. Reeve, P. Payne, A. Wildey, P. Payne. 4th row—W. Watters, K. Eddington, J. Hoffman.



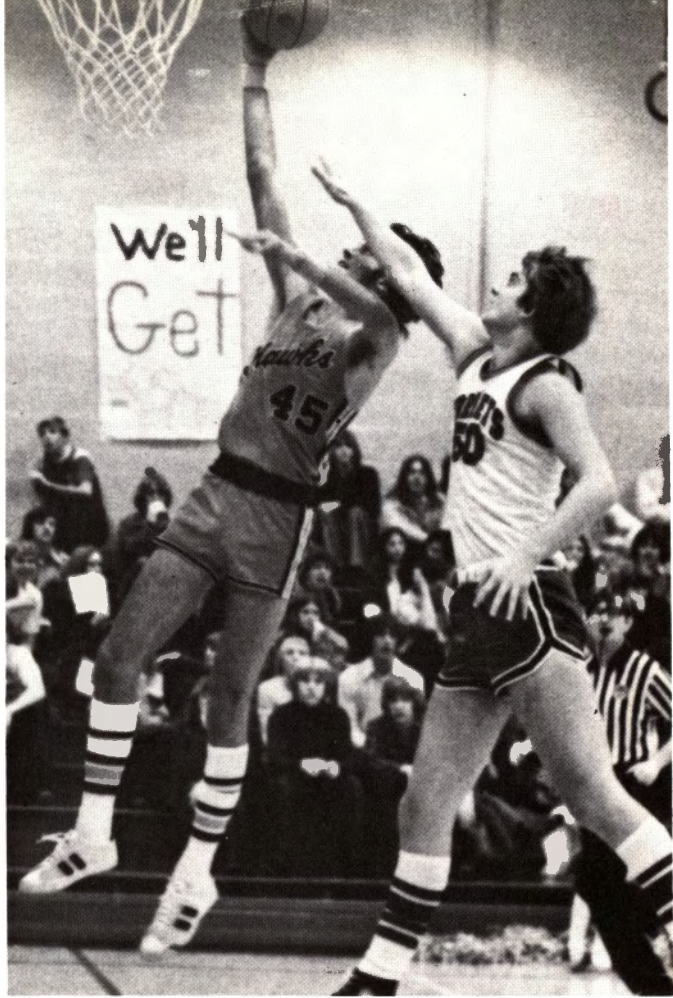
GIRLS SOFTBALL: 1st row—L. Steward—Manager, T. Foltz, D. Lantz, S. Beiswenger, D. Bugbee, S. Mussell, L. Steward, L. Makin. 2nd row—J. Hayhoe, K. Beiswenger, L. Graham, P. Payne, B. Wildey, M. Reeve, P. Payne, Coach Wilson.



VARSITY BASKETBALL: L. Flannery, D. Wright, J. Williams, C. Ewing, C. Snow, L. Hunter, B. Rockwell, L. Bunker, J. Haskell, M. Lantz, D. Budd, J. Benedict, B. Eddington. Coach Frohriep, Manager C. Hatch.

J.V. BASKETBALL: Coach Schaar, T. Boertman, J. Manthei, M. Fletcher, C. Bigg, G. Bauman, J. Boertman, D. Page, M. Black, D. Dershem, S. Beuthin







VARSITY TRACK: 1st. row—Coach Valentino, C. Snow, D. Budd, J. Boertman, B. Rockwell, C. Ettinger. 2nd. row—B. Eddington, G. Schroufe, R. Edwards, M. Edwards. 3rd. row—J. Roark, D. Pierce, C. Beegle. 4th. row—J. Bailey, C. Bigg, M. Horton, B. Baylis. 5th. row—J. Roark, D. Pierce, C. Beegle. 4th row—J. Bailey, C. Bigg, M. Horton, B. Baylis. 5th. row—M. Spooner, D. Spradlin, G. Gowanlock, M. Sutfin.

GIRLS TRACK: 1st. row—A. Lobert, F. Emens, J. Platt, K. Eddington. 2nd. row—J. James, A. Frohriep, T. Redman, B. Belanger. 3rd. row—C. Baylis, C. Emens, S. Wilcenski, J. Gordon. 4th. row—K. Thomas, S. Ames, L. Chick, N. Lawrence. 5th. row—Coach Froh.





VARSITY BASEBALL: 1st. row—C. Howard, L. Flannery, L. Bunker, K. Ward, F. Cruth. 2nd. row—C. Mathews, D. Dershem, S. Dwight, D. Page, J. Williams. 3rd. row—C. Hatch, J. Vaughn, D. Taylor, Coach Frohriep, D. Beegle, D. Wright, D. Ames.

J.V. BASEBALL: 1st. row—M. Haywood, J. Mata, M. Chesney, J. Lohrke. 2nd. row—M. Smith, J. Manthei, R. Ramirez, J. Johnson. 3rd. row—B. King, B. Wildey, M. Fletcher, D. Kent. 4th. row—Coach Wheaton, J. Klinger.

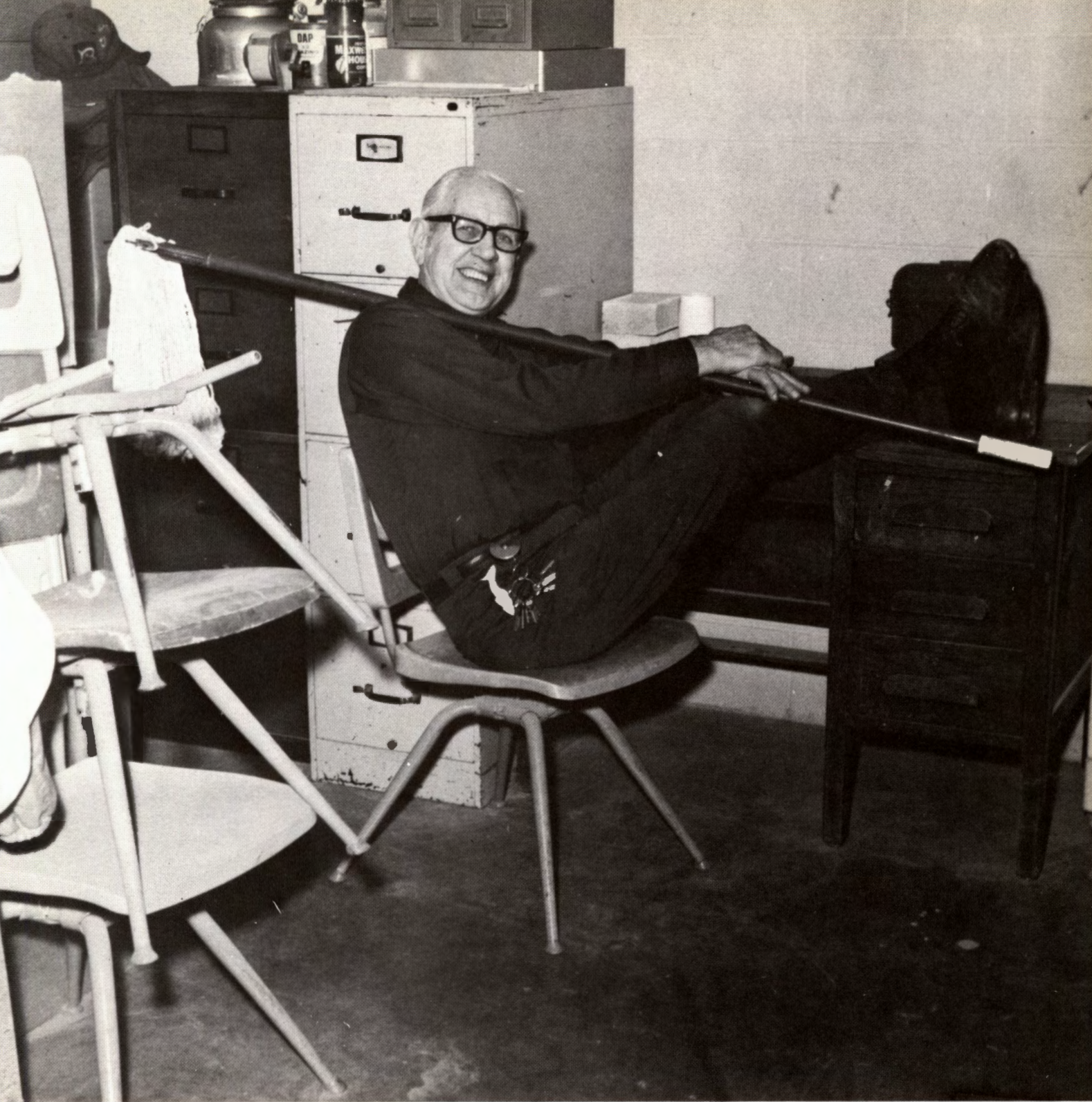




VARSITY CHEERLEADERS: Teresa Thomas, Kalene Thomas, Julie Wright, Sharon Ames, Tracy Bigg, Marjorie Jordon

J.V. CHEERLEADERS: Melinda Back, Becky Grieves, Angie Ames, Carrie Brockett, Leigh Ann McQueen

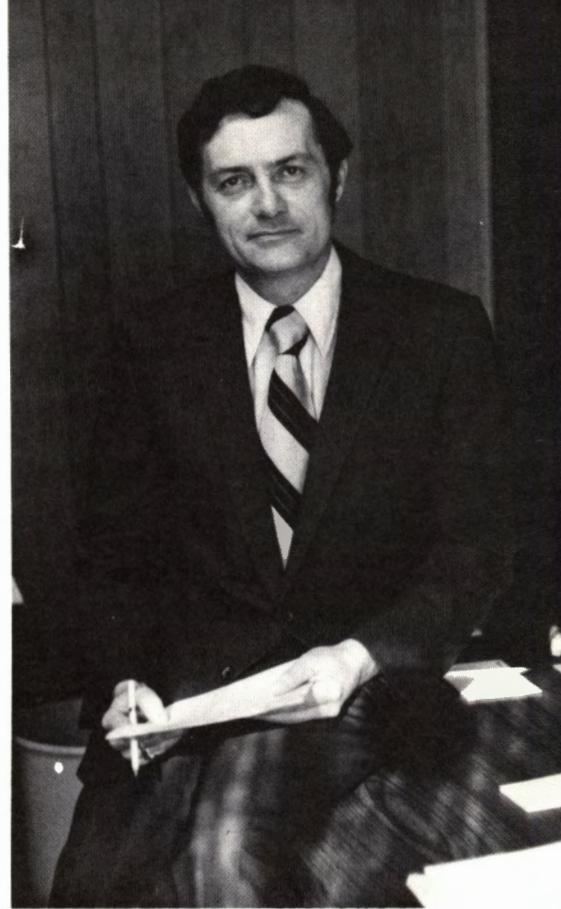




ADMINISTRATION AND FACULTY

Forest Parke Library and Archives - Capital Area District Libraries

David Eddington
Superintendent



Robert Gelina
Coordinator of Services



Freda Lay
Superintendent's Secretary

School Board in action



Forest Park Library and Archives - Capital Area District Libraries



Paul Gordon
Principal



Richard Byrum
Assistant Principal

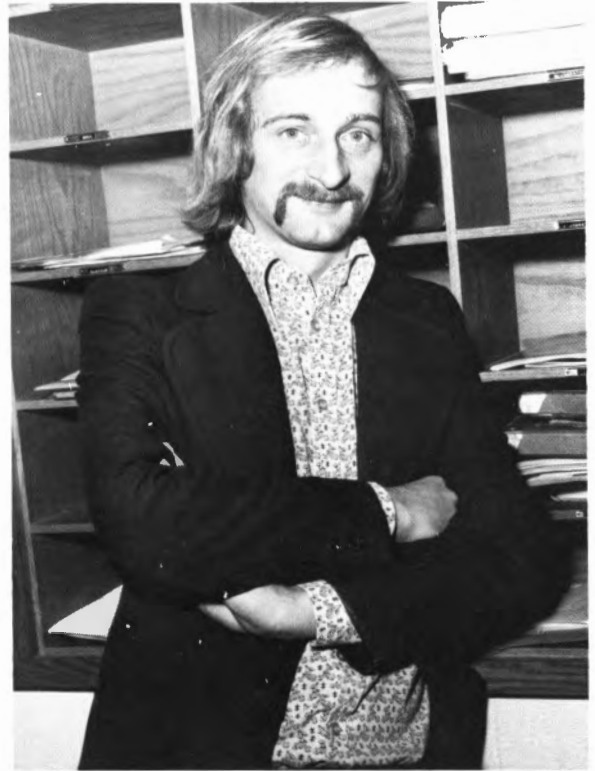
Lenore Burnette
High School Secretary



Pete Sabin
Custodian



Tony Bareham, Mathematics



Carol Ball, Art



William Berz, Instrumental Music

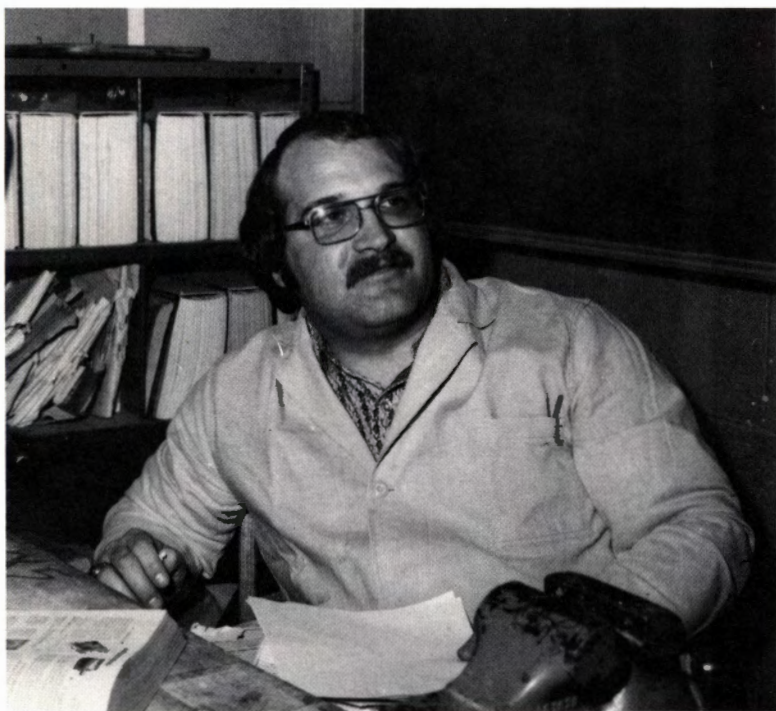
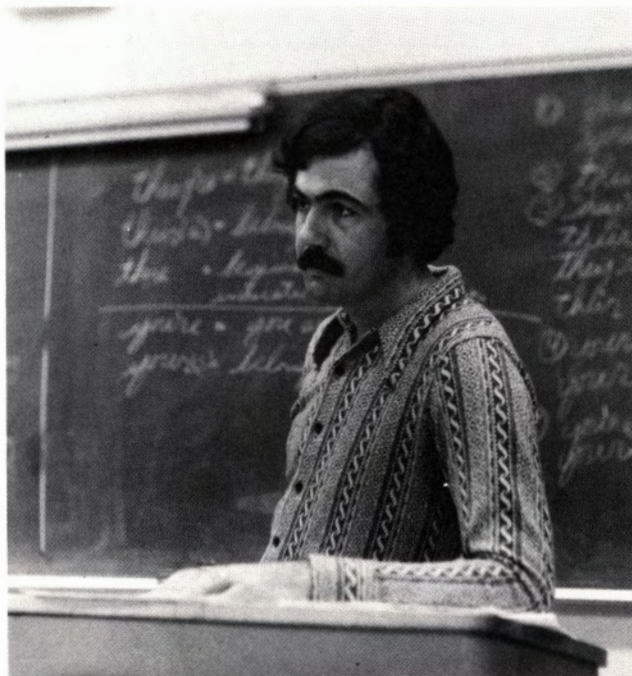


Velma Bissell, Social Studies

Agnes Byndrian, Library



Bill Chapman, English



Tom Collins, Industrial Arts



Imogene Crane, Vocal Music

Richard Frohriep, Counselor



Judy Johnston, Spanish and French



Rod Johnston, Business

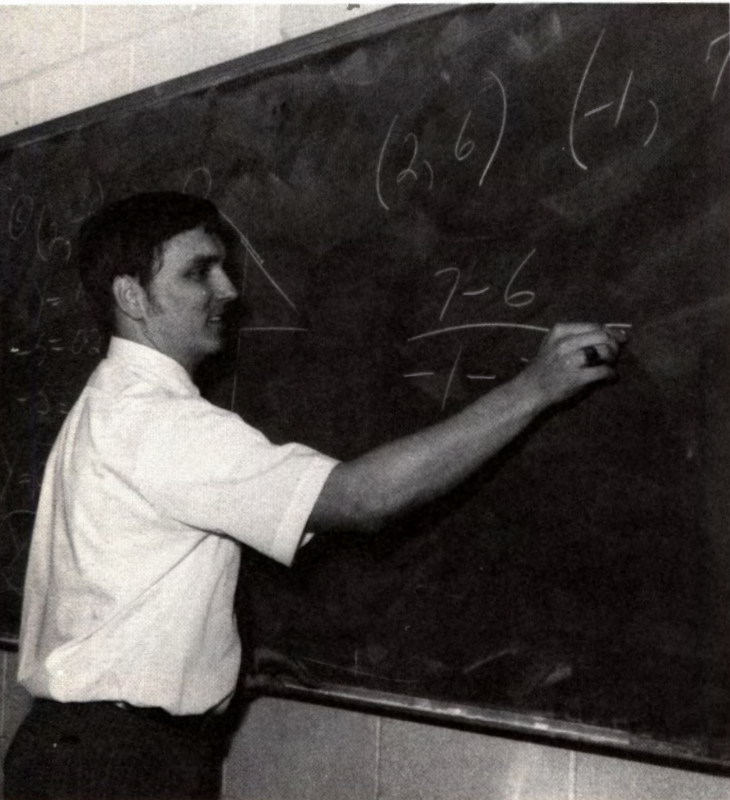


Audry Jordon, English and Latin

Richard McDaniels, Agriculture



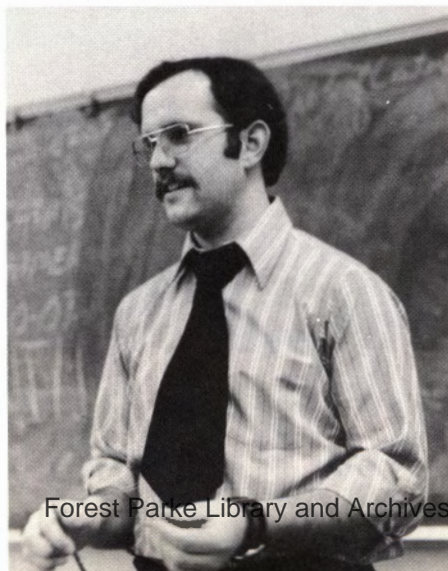
Wayne Miller, Biology



Bill Schaar, Mathematics



Sylvia Sommers, Home Economics



Top left—Paul Tague, Chemistry
 Top right—Bob VanDyke, P.E.
 Center left—Carol VanDyke, Business
 Center right—Philippa Webb, English
 Bottom left—Lee Wheaton, Social Science
 Bottom right—Bunny Wilson, P.E.

ADVERTISERS

Woodland Lawn & Garden

We Service What We Sell

Tractors, Mowers,
Accessories, Snow
Equipment, Chain Saws

Open 8 a.m. to 6 p.m.,
Monday thru Saturday
589-3163, 211 Adams St.



Auto Parts Center

Leslie Flower Shop

Downtown Beauty Salon

Marshall's Dairy.

Jones Food Center

Morea Electric

Kay Elaine Hair Styles

Neil's Sport Center

Leslie Dairy Mart

Wheel Inn Campground

Leslie Drive Inn

Woody's Bar

We don't make promises. We make guarantees.

With all the options and offers we can make, there's no reason why we'd guarantee you something we can't deliver. And we won't.

Everything we guarantee will be put down in writing. In a legal document you get a copy of. In language you can understand.

We think today's Army has a lot to offer you, and we'll try to convince you of that. But we'll never try to mislead you.

If you want to find out about some of our offers, call or see your local Army Representative.

**Today's Army
wants to join you.**

\$326 A MONTH INS'T EVERYTHING

\$326, before deductions, is just our starting salary. And you don't have to spend it on things like food, housing, clothing, medical and dental care. They're free.

Or job training. Today's Army has more than 300 jobs we pay you to learn.

Add a chance to live and work in Europe, Panama, Alaska, Korea. With 30 days paid vacation each year.

A chance to continue your education. Plus 36 months of financial assistance at the college of your choice after you're out.

If you want a job where money isn't everything, call or see your nearest Army Rep.

TODAY'S ARMY WANTS TO JOIN YOU



LESLIE ELECTRONICS

SALES AND SERVICE
TV - RADIOS - STEREOS - TAPE RECORDERS

517-589-8270

200 NORTH MAIN STREET

LESLIE, MICHIGAN 49251

BOB'S FORD

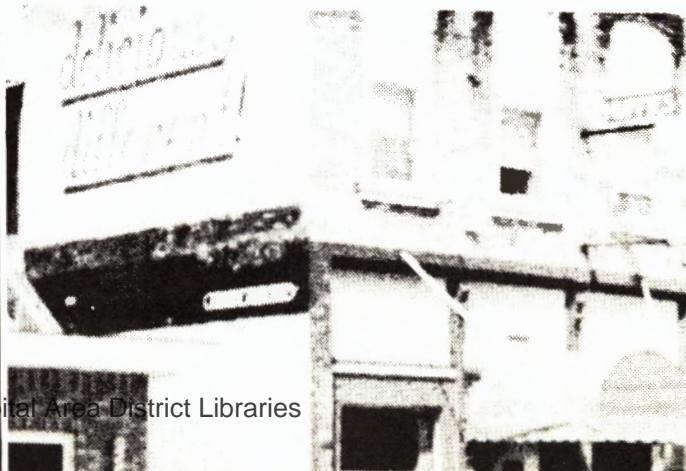
1009 S. Clinton St.
Stockbridge, Mich.

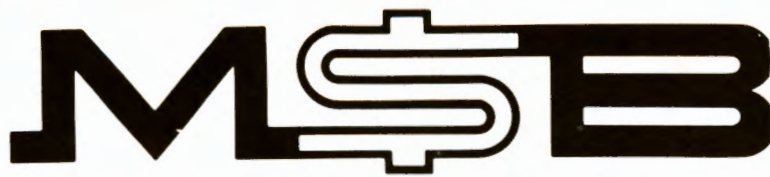


**Huffie's Leslie
Bar**

Fish, Shrimp, Soup

Congratulations Seniors





MASON STATE BANK
FOUNDED 1886 • MASON, MICH. • 48854

Bill Montgomery
Newport Beach Motel
ORMAND Beach, Fla.

Your Leslie People
to serve you
at

MASON
STATE BANK



Leslie Local Independent

For your advertising needs.

It reaches 3,000 homes in
the Leslie Shopping area.

Wedding invitations and business cards.

AALEN AIDES INCOPORATED

—Cleaning Materials of Distinction—

3300 E. Michigan Ave.
782-9383

Jackson, Michigan 49202

“Where Service is the
most Important Products”



FOGG OIL CO.

315 MILL STREET
LESLIE, MICHIGAN

589-3871

AALEN AIDES INCOPORATED

—Cleaning Materials of Distinction—

3300 E. Michigan Ave.
782-9383

Jackson, Michigan 49202

“Where Service is the
most Important Products”

Leslie Cooperative, Inc.



Farmer Owned and
Farmer Controlled

Leslie
Mich.
589-2151



LESLIE ARROW SHOP



100 S. Main, Leslie

For all your outdoor and
sporting needs

NOTA'S BEAUTY COTTAGE

117 N. Main

589-2081

Congratulations Seniors



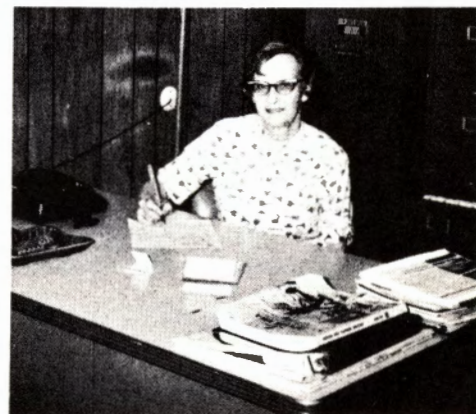
Beauty Boutique

108 E. Bellevue
Leslie, Mi.
589-5541

Jeanie Corwin—Owner
Operators Carol, Sue,
Diane

CHILDS FARM SERVICE

SCHMIT'S MARKET



FERTILIZER
POLE BARNs
BUILDING-
MATERIALS

2651
W. BELLEVUE

589-2371

"For Choice
Meats and For
Groceries"

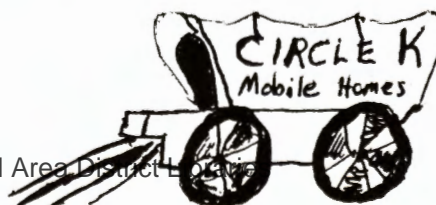
589-3811
169 Main St.
Leslie, Michigan

Jim's Sunoco Service

315 Mill Street
Leslie, Michigan
589-3871

Floyd and Margaret Modert Sales and Park

4380 Edgar Rd. Leslie, Michigan 489-8672



GAMBLES

Leslie, Michigan



Your Store for giftware,
tools, sporting goods,
household needs,
appliances, plumbing
and furniture

Bowl-Inn Recreation and Snack Bar



Pizza and sandwiches;
A good place
for a snack after the game



DERSCHEM'S SUNOCO



Having Trouble? Call 589-8872
606 W. Bellevue

Leonard C. Rouse

Real Estate—

208 S. Main St.

589-3782

Leslie

Congratulations Seniors

Congratulations Seniors

Vince cleaners

Claude and Lucile Smith
111 Carney St.

Phone 589-8620

STATE WIDE FARM EQUIPMENT



505 N. MAIN
Leslie

Good

Luck

Seniors

Welcome Pharmacy

Leslie

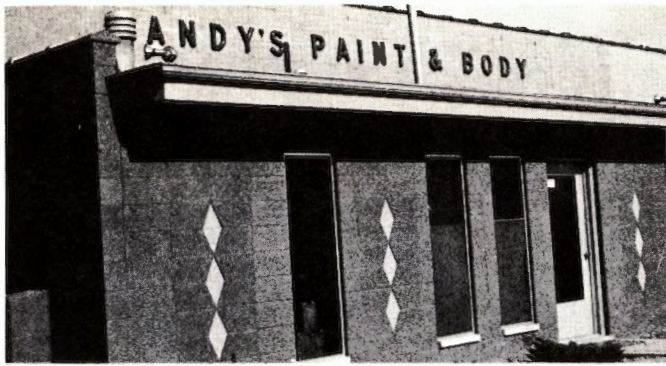
Main St.

Complete
Pharmaceutical
Aids

Cosmetics
Cards
Magazines
Stop in

A Cheerful Staff
Ready to Serve You





A N D Y ' S
P A I N T & B O D Y

4915 Hull Road, Leslie
589-8234

We'll make your car so
beautiful, even you won't know it.

LESLIE BAR PRODUCTS

800 Rice Street
Leslie



A and K GENERAL STORE

5566 Rossman Rd.
Onondaga, Mich.

BOB'S SUNOCO

4720 Onondaga Rd.

Congratulations
Seniors

"Good
Luck
Seniors"

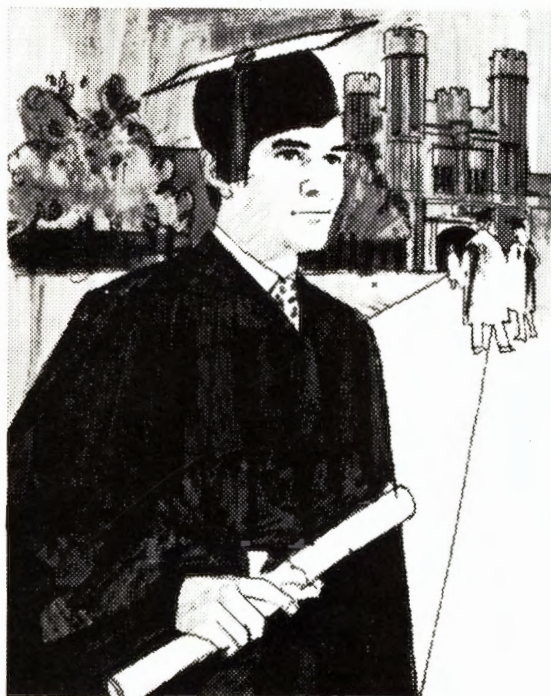


Patience-Montgomery -Luecht Funeral Home



Congratulations
Seniors

**When you
get out of high school,
you're going to have
a lot of questions.**



The New Navy's got some answers.

Like getting an interesting job. If you can qualify, you can choose job training in over 300 exciting jobs. Like computer technology and electronics. Like equipment operation and aviation mechanics. It's some of the best training in the world. It's the kind of accomplishment that can help you go places inside the Navy and out.

But the Navy's got more answers than just jobs. There's travel, great starting pay, a new three-year enlistment, a join-now, report-up-to-six-months-later plan, and a Naval Reserve two-year active duty plan.

**Find out how you can be
someone special in The New Navy.**

SMC HAROLD PAYNE, USNR
NAVY RECRUITING STATION
1017 EAST GRAND RIVER
EAST LANSING, MICHIGAN 48823
PHONE 351-6370

IN LESLIE
KEN CONDEN
CHEV INC
\$ DRIVE A LITTLE TO SAVE A LOT \$



CHEVROLET

NEW & USED CARS & TRUCKS SALES SERVICE PARTS
REPAIR ON ALL MAKES
FREE ESTIMATES
BODY SHOP - WRECKER SERVICE
OPEN MON - WED - FRI 7 AM - 9 PM
TUES - THURS - SAT TIL 6 PM

Call **589-8296**




4760 CHURCHILL RD
LESLIE



Onondaga Tavern

Warm, friendly Service;
Sandwiches, Beer, Wine, and Soft Drinks.

Forest Parke Library and Archives - Capital Area District Libraries

Congratulations Seniors



Race Rd. Leslie, Mich.
phone -517-589-8814



Blossom Orchard

Alfred Wardowski & Sons

Quality Fruit
in season

Leslie, Michigan

Leslie, MI 589-2911



Aeroquip Corporation was started by a "MAN WITH AN IDEA." His idea today helps build highways, air conditioned homes, and keeps trucks on the move.

614 Mill Street LESLIE 589-8203

Good Luck Graduates

Mitchell
Dept.
Store



For
Nationally
advertised
brands of
shoes, yard goods
clothing, floor
covering, etc.
come to

GROWING

"AFTER YOU RETURN THE CAP AND GOWN . . . THAN WHAT?" Choosing a vocation, higher education, career? In what field? Where will you live? Problems get bigger as you grow, don't they? There is comfort in knowing that sound financial planning will provide the funds you need when a financial emergency arises. We've been helping young people like you, your parents and grandparents with sound financial services for years.



THE *Peoples Bank of Leslie*

"the people pleasers"

MEMBER F.D.I.C.

RICHARD'S RESTAURANT

139 Main Street
We have delicious food at a
price you'll pay

Mon-
Thurs.
6am-8pm

Fri-Sat
6am-9pm



Congratulations
and
Good Luck
From

LEN INDUSTRIES INCORPORATED

815 Rice Street
Leslie
589-8201

GERRY'S

S. Main St.



LESLIE

One of the most popular places in town for after school gathering is Gerry's a place where you can get a cold bottle of pop or a bag of chips

DON'S BARBER SHOP and "Hairstyling"

160 S. Main,
Leslie, Michigan 49251

Open 7:30 am. to
6:00pm.

Closed Mondays

Phone:

589-5441

Closed at 5:00
on Saturday

Henderson Standard Station



Congratulations
Seniors

BUDD'S MARATHON and RESTAURANT

601 W. BELLEVUE, LESLIE

Stop in
at our rest-
aurant and

enjoy
some of
our deli-
cious
food



