

Getting Started

Screenless Coding

indi has an onboard color sensor; driving over the color tiles tells indi what to do, where to go, and how fast. Everything starts with the **Green** tile, which tells indi to **Go**. Place other tiles in indi's path and see what happens.

Power indi on/off by pressing the power button on the back.

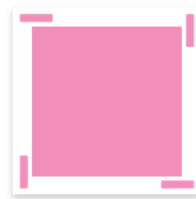


Place indi on a green tile to run your program. You can do this any time, even when you are disconnected from the app. Remember, green means go!



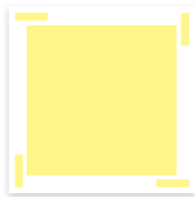
Green ●

Start,
Increase Speed



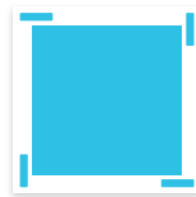
Pink ♥

90° Left Turn



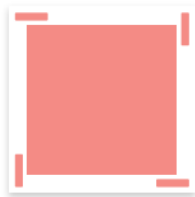
Yellow ★

Decrease Speed



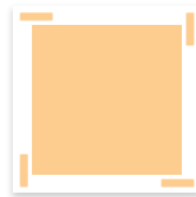
Blue ●

90° Right Turn



Red ⬡

Stop



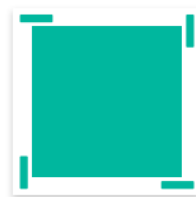
Orange 🌙

45° Left Turn



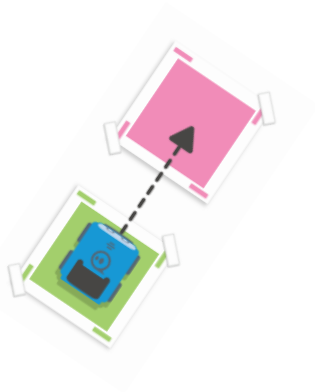
Purple ■

Celebrate



Teal ▲

45° Right Turn



Make sure indi™ is pointed in the direction it needs to go.



At first, place color tiles close together to get the hang of it.



indi will stop rolling after 3 seconds if it doesn't detect another color.



indi will power off if it sits for over 5 minutes.

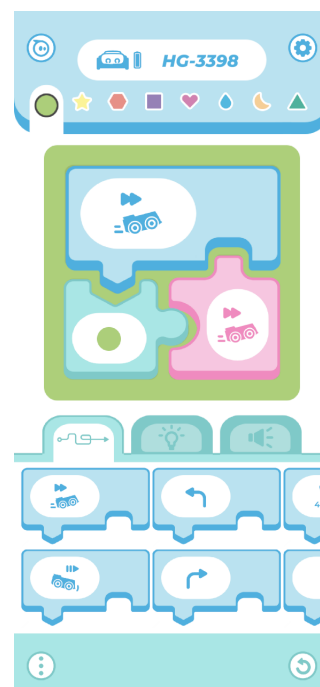
Getting Started—Connected Coding

Connected Coding

Once you've mastered the basics, use the included iPad to start learning basic block coding in the Sphero EDU Jr app. Connect to indi to reconfigure how indi reacts to each color, add new movements, lights, sounds, and more.

Sphero EDU Jr app

- Press on a color tab along the top, then using the drag-and-drop blocks to change what indi does when it drives over that color.
- Return everything to default by pressing the reset button in the lower right corner of the app. You can also reset indi by pressing and holding the power button for three seconds.
- Press on the three dots in the lower left hand corner to switch between ways to interact with indi.



iPad Basics

Sleep/Wake (Power) Button

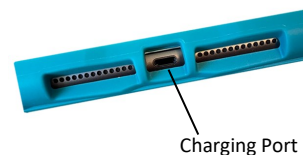
The sleep/wake button is on the top edge of the device.

- To turn the device on, hold down the sleep/wake button.
- Once the device is on, tap the home button twice to unlock the screen.
- The iPad will go back to sleep mode if left undisturbed. Press the home button twice to wake it back up.
- To turn the device off, hold down the power button, then use the slider that shows on the screen to turn off.



Charging

- The charging port is located at the bottom of the device. Please charge using the included lightning cable and charger.



Sphero EDU Jr app

- On the iPad, tap the edu jr app icon to open it



Note: The included iPad is set up to work only with indi and does not allow for internet access or other activities.