

# Meet Dash

Dash is a real robot, ready to play with you! Use the below apps on the iPad to interact with Dash.

Have questions not answered here? Wonder Workshop has a help section at [help.makewonder.com](http://help.makewonder.com) and on Youtube at [bit.ly/YTDashVideos](http://bit.ly/YTDashVideos)



## Go

For ages 6+

Give Dash a new name, spin in a circle, blink a robot eye and more! Exploring the robot's lights, sounds, sensors and movements, Go is the first step to getting to know all that Dash can do.



## Wonder

For ages 6+

Wonder makes robotics as delightful as finger painting. A picture-based coding language built for kids, children create detailed behaviors for Dash, creating the robot pet, pal or sidekick of their dreams.



## Path

For ages 6+

With Path, kids start with the fundamentals of robotics and coding before they can read! Drawing a route on their tablet or smartphone, children send Dash on journeys around the house with their code.



## Xylo

For ages 6+

Program Dash to be a musical performer with Xylo. Used with Xylophone accessory, kids can program Dash to play their favorite song or make new tunes of their own.



## Blockly

For ages 6+

Designed for children aged 6 and above, Blockly introduces advanced concepts of coding through playful projects and puzzles. Exploring variables, events, conditionals and more, Dash becomes a dancer, adventurer, artist and prankster, powered by kid's code.

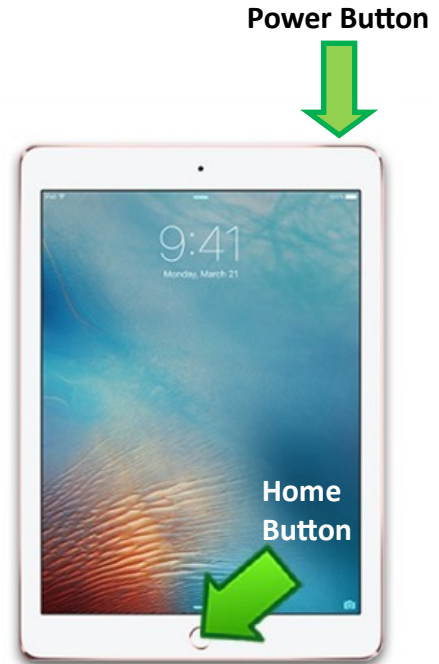
\*\*\*Please note that a few features of these apps do not work without an internet connection.

# iPad Basics

## Power Button

The power button is on the top edge of the device.

- To turn the device **on**, hold down the power button.
- Once the device is on, tap the home button twice to unlock the screen.
- The iPad will go back to sleep mode if left undisturbed. Press the home button twice to wake it back up.
- To turn the device off, hold down the power button, then use the slider that shows on the screen to turn off.



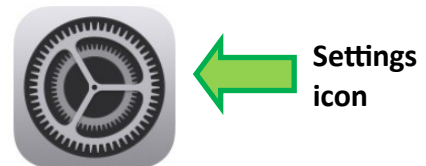
## Charging

- The charging port is located at the bottom of the device. Please charge using the included lightning cable and charger.



## Wireless

1. Tap the Settings icon in the Dock on the Home Screen.
2. The Settings will appear. Tap Wi-Fi in the left pane.
3. To join a network in range, look for it under Choose a Network. Then tap the network name that you want to use. If the network is secure, you'll need to enter a password in order to connect to it.



## Apps

- Tap the App icon to open an app.
- Press the Home Button to return to the home screen.

## Other Settings

- Please refrain from changing any settings other than the Wireless connection on CADL's iPads. Help keep the iPad's useful for everyone. Thanks!



# FAQ

## How do I connect to Dash?

To connect your Dash:

Step 1: Open a Wonder Workshop app.

Step 2: Click on the orange plus sign (+) in the top right corner.

Step 3: Click on the robot to which you want to connect.

And get playing once it is connected!

## Is the robot waterproof?

Dash is afraid of the water! He is not waterproof, so avoid using near water or cleaning with liquids.

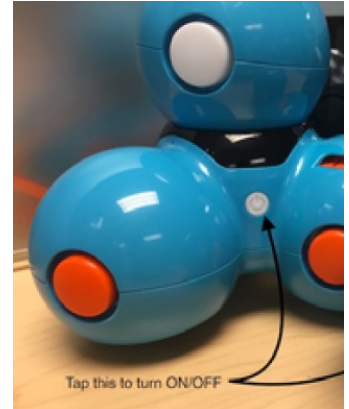
## How do I turn off the robot?

Please tap the power button on the side, see picture below.

The robot should power itself off after 15 minutes. If the robot does not power itself off, hold the power button for 7 seconds.

## Does Dash have a camera installed in his eye?

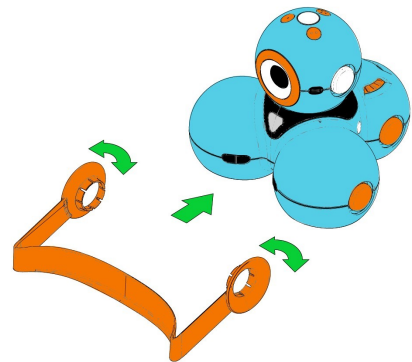
Dash can sense objects in front or in back of it via IR (infrared) sensors, but there are no cameras.



# Bulldozer Bar

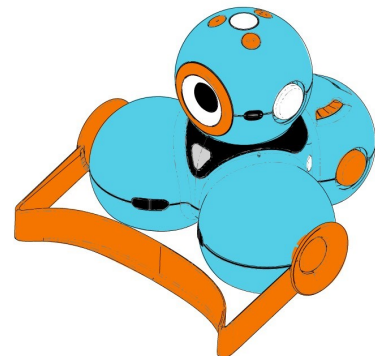
## Step 1

The bulldozer bar snaps on to the connectors on the sides of Dash's front two wheels. Line up the rings of the bulldozer bar to the connection points on Dash.



## Step 2

Press firmly until you hear a click to connect. The bulldozer bar should lie flat on the ground, and moves along with Dash as clean-up duty is completed!

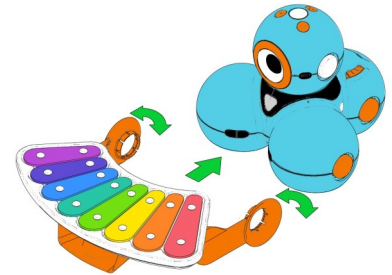


# Xylophone



## Step 1

Place Dash on a flat surface. Pull the connector rings of the xylophone outward and line them up to the connection points on the sides of Dash's front wheels. Press firmly to snap the xylophone in place. To make sure the xylophone is properly aligned, check that its wheel is resting on the ground in front of Dash.



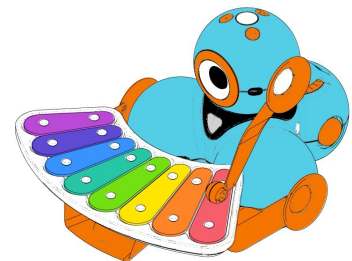
## Step 2

Line up the mallet's connector ring with the connection point on the left side of Dash's head. (If you are facing the robot, its left is to your right.)



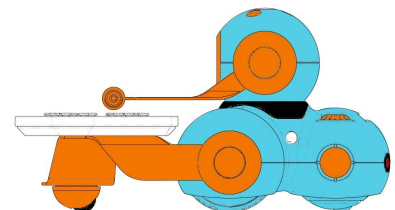
## Step 3

Press firmly to snap the mallet into place.



## Step 4

To make sure the mallet is properly aligned, check that it is level (pointing straight forward) when Dash's head and eye are facing straight ahead. Once the xylophone is connected, Dash is ready to play! Tap on the Xylo App on the iPad to start making music!



# Launcher

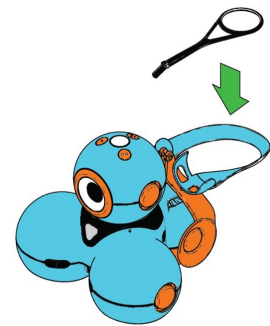


## Step 1

The launcher snaps on to the connectors on the sides of one of Dash's wheels. Press firmly until you hear a click.

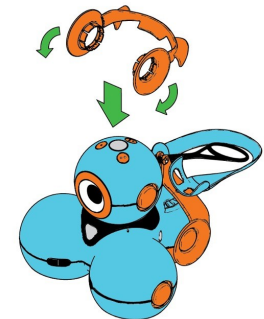
## Step 2

Now slide the small black Ball Holder to the Launcher, with the slender end affixed to the top of the Connector. This may already be connected.



## Step 3

Now click the remaining orange Connector to Dash's head, so that the curved piece is in the back. Line up the rings to the buttons on either side of the head and snap into place.



## Step 4

Add one of the three colored balls to each of the ball compartments of the Launcher. The Launcher is now ready to use with the Blockly or Wonder apps. Use the apps to vary the power on the Launcher and try to aim for targets. Ready... Aim... Launch!

