



Thanks for checking out the Button Maker machine!
Here's all the info to get you started making your buttons.

BUTTON DESIGN

Start with designing your buttons. You may choose to draw directly on paper, or make your creations on the computer. See the Graphic Layout Explanation to see how the button layout works.

GRAPHIC LAYOUT EXPLANATION

When making a your button the first circle you want to make is the outer graphic edge or the "cut line". For a 1.25" button the cut line is 1.629".

The second measurement is the live graphic area. This is the area that you will see on the face of the button. For a 1.25" button, the live graphic area is 1.156". You want to keep any graphic, text or important part within this area.

The area between the dashed line and solid line is the "bleed area". This is the area that wraps around the edge of the button onto the back.

To obtain a clean, professional looking button you may want to expand your picture into the bleed area. If you cannot do this with your picture you can fill the outer graphic edge in with a color to match your picture. See examples to the right.



**When printing do not include the dashed line of the graphic area (as shown above) or it will appear on the finished button. This line is meant as a reference only.

Find more instructions and layouts at: <http://bit.ly/BTmlayouts>

GRAPHIC PUNCH INSTRUCTIONS

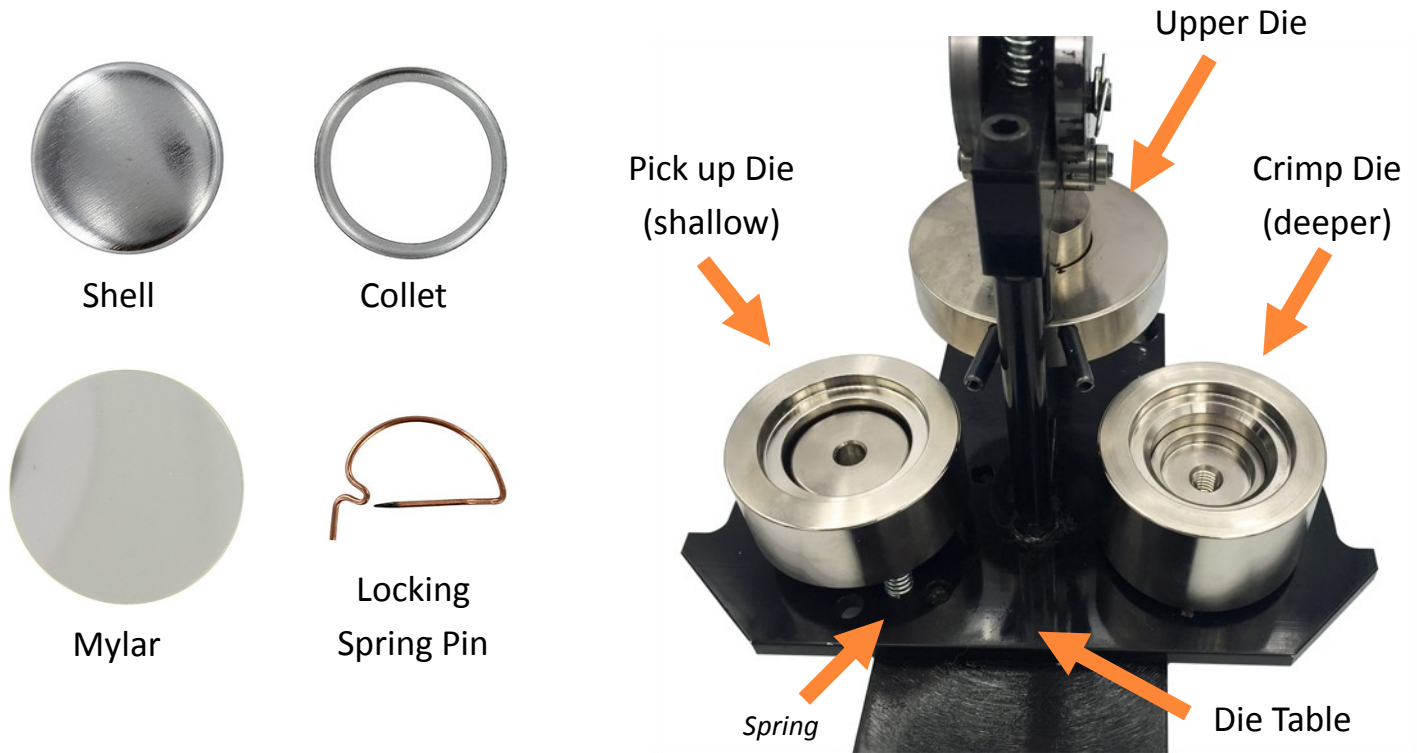
Once you have created graphics, you need to cut them out before you can make buttons. Use the graphic punch.

1. Once your graphics are laid out on your sheet of paper, you may use scissors to cut your paper into strips.
2. With the punch handle in the up position, feed the strip between the two top plates of the punch. Use the hole on the top of the punch to visually center your graphic.
3. When the graphic is in the desired position, press the handle down as far as it will go. Remove the cut image by pressing up on the ejector on the bottom of the punch.
4. Continue to pass the strip through the punch, centering it, lowering the handle and removing the graphic.

Find video instructions at: <http://bit.ly/BTMdirections>



Button Parts



BUTTON MAKER INSTRUCTIONS

1. Identify the crimp die and the pickup die. (see picture above)
2. Insert a shell into the pickup die with the sharp edge facing downward. Place the graphic with your design facing up on the shell. Place the mylar on top of the graphic.
3. Place a collet sharp side facing upwards into the crimp die.
4. Rotate the die table so the pick up die is under the upper die. Pull the handle down as far as it will go and raise it back up to its rest position.
5. Rotate the die table so the crimp die is under the upper die. Pull the handle down as far as it will go and raise it back up to its rest position.
6. Rotate the die table to remove the button.
7. Place the locking spring pin into the back of your button.

Find video instructions at: <http://bit.ly/BTMdirections>

FAQ

Paper

This button machine is set up to use regular printer paper. It works best with paper that is between 22 lbs. and 28 lbs. Please refrain from using photos, they jam the cutter and the machine.

Supplies

For ease of access, you may purchase button making supplies at any CADL branch. Button supplies are sold in packs of 25. With your checkout, you receive supplies to make 25 buttons.

If you are interested in purchasing your own supplies, separate from CADL, supplies for this machine are found at www.Tecre.com. Please do not use any other manufacturer's supplies in this button machine, as it may break.