

How to use accessibility features on new patron computers (7/23/2009)

Change the screen size

1. Double click the “Change Screen Size” shortcut on the desktop.



2. Click a new size to select it.



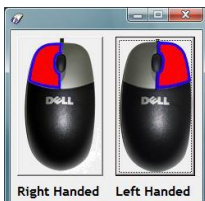
3. The change will take effect immediately. To pick another size, simply repeat the process. The system will automatically return to the small setting after rebooting.

Swap Mouse Buttons

1. Double click the “Swap Mouse Buttons” shortcut on the desktop



2. Choose the mouse layout you desire. The left side is the default layout, and the right side is the optional reverse layout.



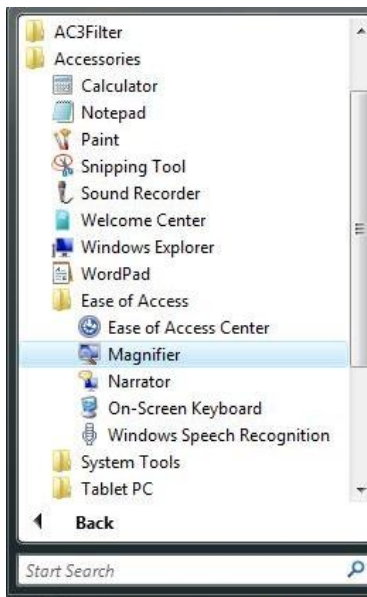
Ease of Access Center

You can find other accessibility tools under the ease of access center. To get there:

1. Click the Start button.



2. Click Accessories.
3. Click Ease of Access.



4. Select the tool you wish to use by clicking it. It will begin working immediately. Click the X in the top right corner to deactivate the accessibility feature.